

# LINEAR ACTUATOR TECHNOLOGY



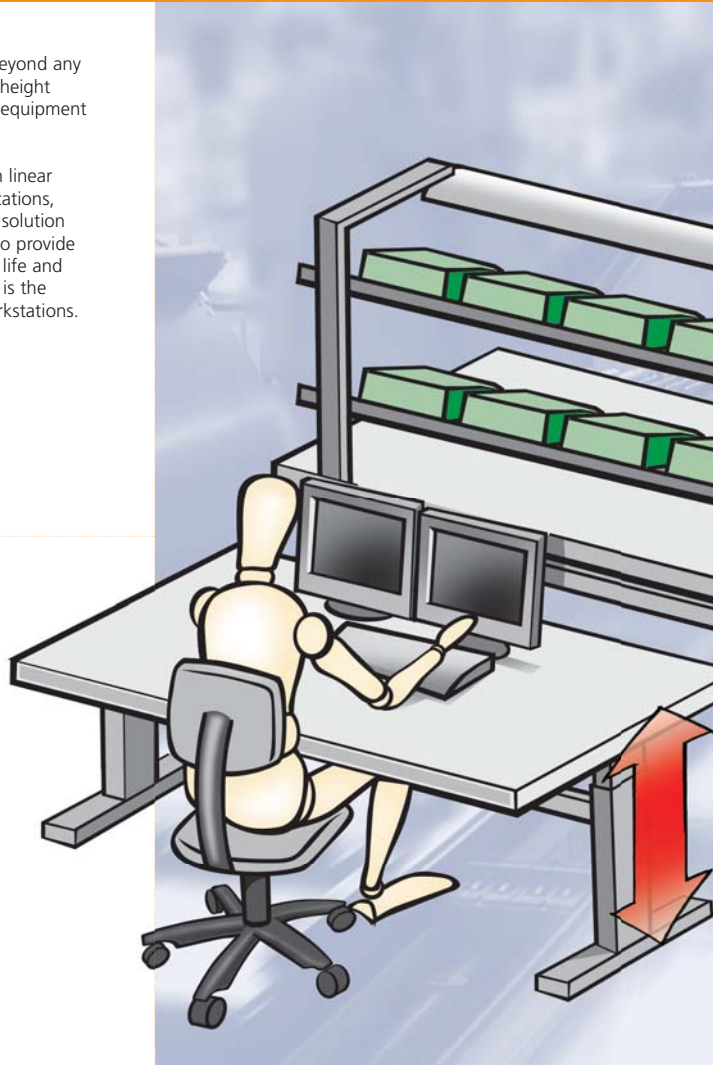
Height adjustable workstations

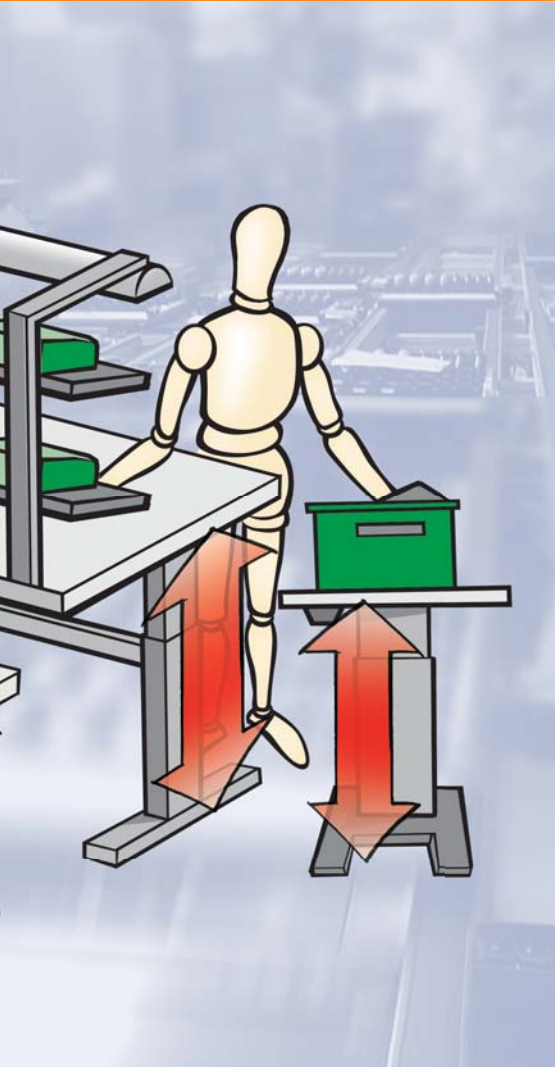
[www.deskline.linak.com](http://www.deskline.linak.com)

# Focus on ergonomics at work

The link between particular job tasks and degenerative ailments has been proven beyond any doubt by ergonomists. They recommend height adjustable workstations as vital pieces of equipment in the daily workplace for all.

With more than 25 years of experience in linear adjustment of a variety of different applications, LINAK® has the electric height adjustable solution you need. We have made it our mission to provide products that improve people's quality of life and working environment. That is why LINAK is the obvious partner for height adjustable workstations.





Benefits from the use of an electrical height adjustable workstation:

#### **Advantages to the employee**

- Fewer chronic problems
- Improved working environment
- Avoidance of monotonous postures
- Activation of heart, circulation and the intestinal system
- Prevention of muscle inactivity
- Circulation of the disc tissue
- Comfortable working posture
- Better comfort = higher degree of satisfaction

#### **Advantages to the company**

- Increased motivation and job satisfaction
- Increased performance and efficiency
- Long-term decrease of absenteeism due to illness
- Increased product and service quality
- Improved internal communication and cooperation
- Image upgrade for the company
- Falling failure rate
- Cost optimisation by means of desk sharing
- A more dynamic and efficient working style

# Main applications

The examples below are typical workstation applications that all require adjustable functionalities to prevent physical ailments among the employees using them.

## Industrial assembly tables

Height adjustable industrial assembly tables + ESD make everyday life easier and more comfortable for the individual worker. Even at heavy loads the user/operator can adjust the table whenever needed offering the maximum flexibility. LINAK systems offer:

- Quality actuator systems up to 16 legs in parallel
- High lifting capacity
- Robust and sturdy design/construction
- Smooth drive even at high load
- Userfriendly, and intuitive control unit



## Trading tables

Trading tables are present in trading and control room environments and offer the user a flexible and more comfortable workplace

- Quality actuator systems up to 16 legs in parallel
- High lifting capacity
- Robust and sturdy design/construction
- Smooth drive even at high load
- Userfriendly, and intuitive control unit



## Surveillance desks

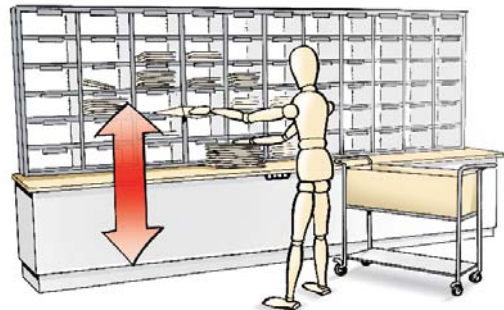
No matter if we talk about adjustable surveillance desks in a mall, at the large plant, the train station or wherever, the keywords are high lifting capacity, flexibility, safety and high performance. LINAK systems offer:

- Quality actuator systems up to 16 legs in parallel
- High lifting capacity
- Robust and sturdy design/construction
- Smooth drive even at high load
- Userfriendly, and intuitive control unit

## Mail sorting furniture

Large furniture like mail sorting tables with attached shelves and heavy load requires robust and high quality actuator systems, which can handle the demanding job. LINAK has several possibilities for this kind of applications with focus on:

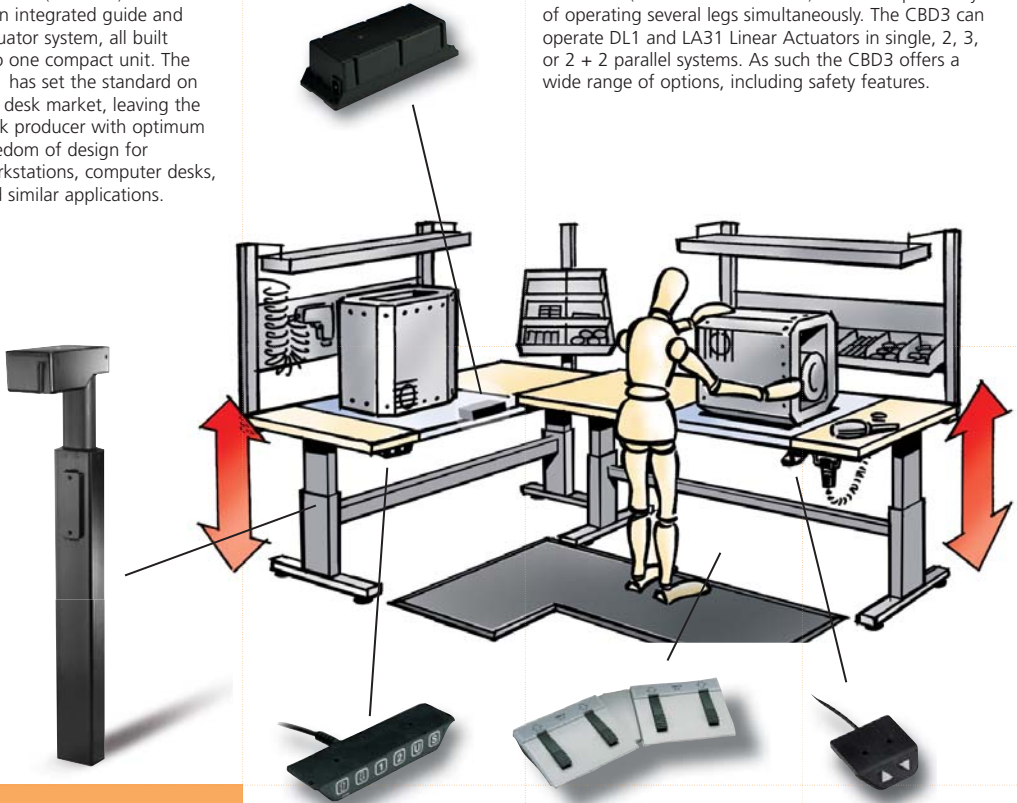
- Quality actuator systems up to 16 legs in parallel
- High lifting capacity
- Robust and sturdy design/construction
- Smooth drive even at high load
- Userfriendly, and intuitive control unit



# Product programme

## DL1

The DL1 (Desk Lift) series is an integrated guide and actuator system, all built into one compact unit. The DL1 has set the standard on the desk market, leaving the desk producer with optimum freedom of design for workstations, computer desks, and similar applications.



## CBD3

The CBD3 (Control Box for Desks) offers the possibility of operating several legs simultaneously. The CBD3 can operate DL1 and LA31 Linear Actuators in single, 2, 3, or 2 + 2 parallel systems. As such the CBD3 offers a wide range of options, including safety features.

## DL1 PERFORMANCE

Max. load per leg	1600 N
Max. speed level, unloaded	43 mm/sec.
Max. stroke length	500 mm

## DP1

The DP Desk Panel is a compact unit, which offers you the choice of memory with up to 4 memory positions. Furthermore the DP is available in different versions.

## FS

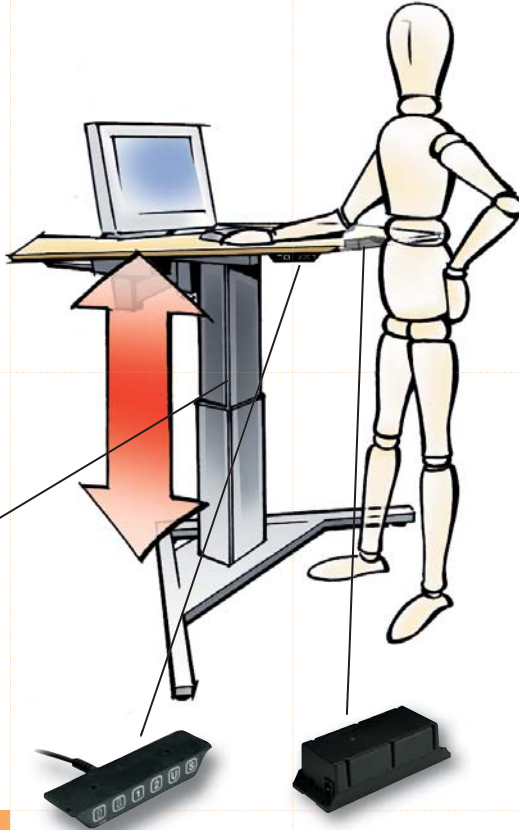
The FS Foot Switch allows you to continue working while adjusting your workstation to the optimum position. The FS can control 1 or 2 individual stations.

## DPB

The DPB Desk Panel is a compact unit with an angled front. The DPB can either be mounted directly under the desk or placed in a drawer.

## DL2

The DL2 (Desk Lift) column is designed for applications where it can be operated as a single column. The DL2 lifting column is the ideal choice for tasks such as height adjustment of computer workstations, workbenches, or a wide selection of other tasks. The DL2 comes with optional memory drive.



### CBD4

The CBD4 is an innovative microprocessor based control box, which ensures an optimum parallel drive, memory and a very low noise level. The mains cable is exchangeable. Individual setup possible with configuration.



### FS

The FS Foot Switch allows you to continue working while adjusting your workstation to the optimum position. The FS can control 1 or 2 individual stations.



### DPB

The DPB Desk Panel is a compact unit with an angled front. The DPB can either be mounted directly under the desk or placed in a drawer.

## DL2 PERFORMANCE

Max. load per leg	2500 N
Max. speed level, unloaded	43 mm/sec.
Max. stroke length	500 mm

### DP1

The DP Desk Panel is a compact unit, which offers you the choice of memory with up to 4 memory positions. Furthermore the DP is available in different versions.

### CBD2

The CBD2 Control Box is especially developed for use together with the DL2 column. The CBD2 is available with or without microprocessor. The microprocessor ensures advanced features like memory etc.

# Product programme

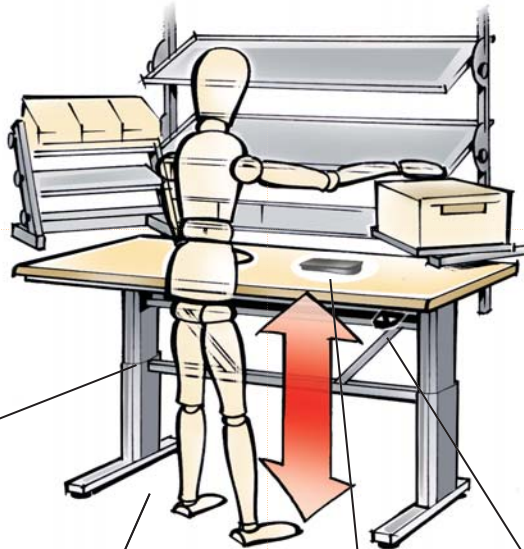
## DL6

The DL6 (Desk Lift) is a 3-part integrated actuator and guidance system with a small compact motor housing. The outer dimensions of the DL6 are small like DL1/DL5, while maintaining a long stroke length. The motor cable is exchangeable.



## WDPL

The WDPL is a display panel that offers the user(s) up to 9 memory positions and control of up to 3 independent desks, just to name a few features.



## DPA

The DPA Desk Panel is a compact panel for adjusting the desk. The DPA is a flexible unit, which can be mounted in different ways and adjusted in different positions.



## DP1

The DP Desk Panel is a compact unit, which offers you the choice of memory with up to 3 memory positions or e.g. control of up to 3 independent desks. Furthermore, the DP is available in different versions.



## FS

The FS Foot Switch allows you to continue working while adjusting your workstation to the optimum position. The FS can control 1 or 2 individual stations.



## CBD4

The CBD4 is an innovative microprocessor based control box, which ensures an optimum parallel drive, memory and a very low noise level. The mains cable is exchangeable. Individual setup possible with configuration.



## DPB

The DPB Desk Panel is a compact unit with an angled front. The DPB can either be mounted directly under the desk or placed in a drawer.

## DL6 PERFORMANCE

Max. load per leg	1200 N
Max. speed level, unloaded	38 mm/sec.
Max. stroke length	650 mm

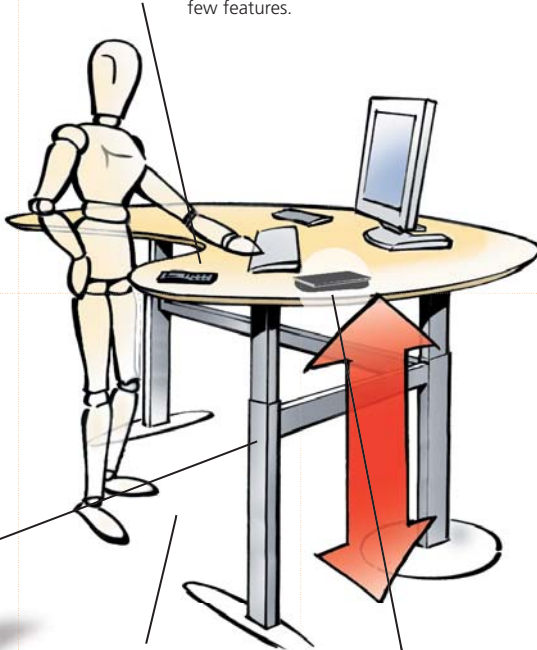
## DL4

The DL4 (Desk Lift) column offers a 3-part integrated actuator and guidance system with extra stroke length. The integrated motor and the low installation dimension ensure optimum design freedom. The DL4 comes in 3 standard colours, but can be ordered in any colour you like (option). The DL4 motor cable is exchangeable.



## WDPL

The WDPL is a display panel that offers the user(s) up to 9 memory positions and control of up to 3 independent desks, just to name a few features.



## DPA

The DPA Desk Panel is a compact panel for adjusting the desk. The DPA is a flexible unit, which can be mounted in different ways and adjusted in different positions.



## DP1

The DP Desk Panel is a compact unit, which offers you the choice of memory with up to 3 memory positions or e.g. control of up to 3 independent desks. Furthermore, the DP is available in different versions.



## FS

The FS Foot Switch allows you to continue working while adjusting your workstation to the optimum position. The FS can control 1 or 2 individual stations.



## CBD4

The CBD4 is an innovative microprocessor based control box, which ensures an optimum parallel drive, memory and a very low noise level. The mains cable is exchangeable. Individual setup possible with configuration.



## DPB

The DPB Desk Panel is a compact unit with an angled front. The DPB can either be mounted directly under the desk or placed in a drawer.

## DL4 PERFORMANCE

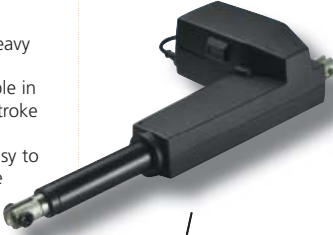
Max. load per leg	800 N
Max. speed level, unloaded	43 mm/sec.
Max. stroke length	675 mm

Multi-parallel up to 16 legs in serial connection

# Product programme

## LA31

The LA31 actuator is a perfect choice where heavy forces are needed. The LA31 actuator is available in different versions e.g. stroke lengths. The LA31 actuator is easy to install and offers a wide range of options as a part of a CBD4 system.



## WDPL

The WDPL is a display panel that offers the user(s) up to 9 memory positions and control of up to 3 independent desks, just to name a few features.



## DPA

The DPA Desk Panel is a compact panel for adjusting the desk. The DPA is a flexible unit, which can be mounted in different ways and adjusted in different positions.



## DP1

The DP Desk Panel is a compact unit, which offers you the choice of memory with up to 3 memory positions or e.g. control of up to 3 independent desks. Furthermore, the DP is available in different versions.



## LA31 PERFORMANCE

Max. load per leg	3500 N
Max. speed level, unloaded	20 mm/sec.
Max. stroke length	500 mm

## FS

The FS Foot Switch allows you to continue working while adjusting your workstation to the optimum position. The FS can control 1 or 2 individual stations.



## CBD4

The CBD4 is an innovative microprocessor based control box, which ensures an optimum parallel drive, memory and a very low noise level. The mains cable is exchangeable. Individual setup possible with configuration.



## DPB

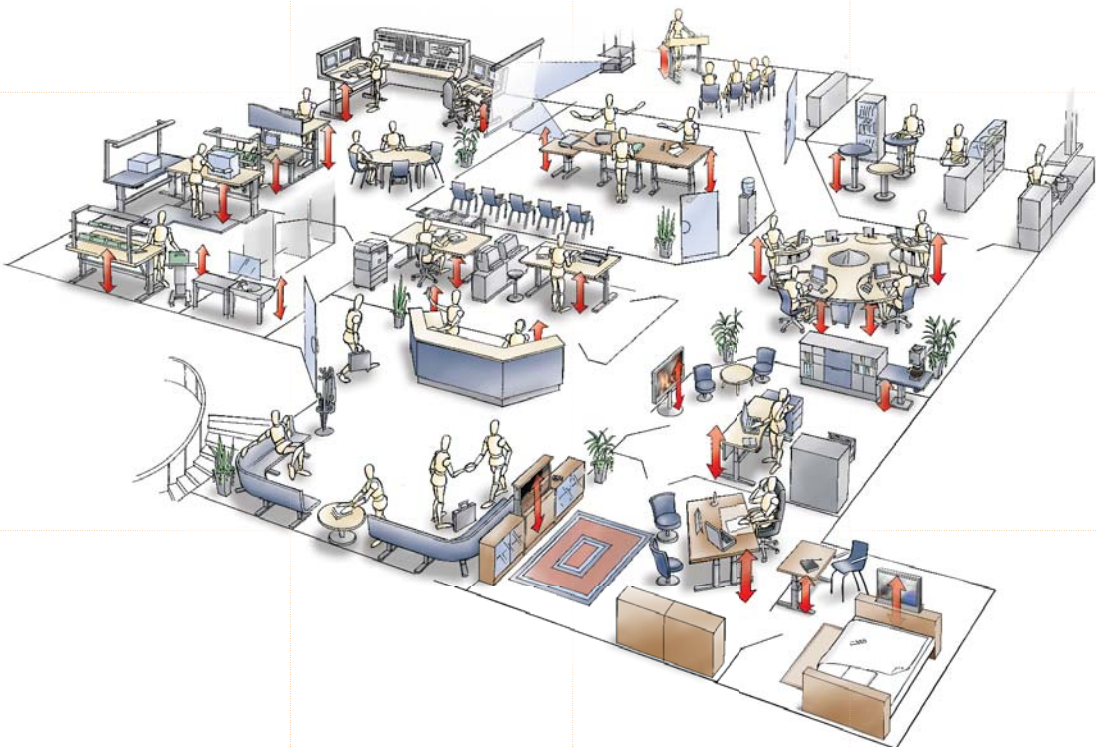
The DPB Desk Panel is a compact unit with an angled front. The DPB can either be mounted directly under the desk or placed in a drawer.



# A wide range of solutions

Our comprehensive product programme can be tailored to match your specific needs. LINAK DESKLINE® solutions allow you to adapt your workplace to your workers rather than the other way round.

No matter what actuator system solution you need, LINAK has the system.



WE PROVIDE INNOVATIVE ACTUATION SOLUTIONS THAT IMPROVE  
PEOPLE'S QUALITY OF LIFE AND WORKING ENVIRONMENT

**TERMS OF USE**

The user is responsible for determining the suitability of LINAK products for specific application. LINAK takes great care in providing accurate and up-to-date information on its products.

However, due to continuous development in order to improve its products, LINAK products are subject to frequent modifications and changes without prior notice. Therefore, LINAK cannot guarantee the correct and actual status of said information on its products.

While LINAK uses its best efforts to fulfill orders, LINAK cannot, for the same reasons as mentioned above, guarantee the availability of any particular product. Therefore, LINAK reserves the right to discontinue the sale of any product displayed on its website or listed in its catalogues or other written material drawn up by LINAK.

All sales are subject to the Standard Terms of Sale and Delivery for LINAK. For a copy thereof, please contact LINAK.



**LINAK WORLDWIDE**

**FACTORIES**

- **CHINA**  
LINAK (Shenzhen) Actuator Systems, Ltd.  
Phone: +86 755 8610 6656 · Fax: +86 755 8610 6990  
E-mail: sales@linak.cn · www.linak.cn
- **DENMARK**  
LINAK A/S - Group Headquarters Guderup  
Phone: +45 73 15 15 15 · Fax: +45 74 45 80 48  
Fax (Sales): +45 73 15 16 13  
E-mail: info@linak.com · www.linak.com
- **SLOVAKIA**  
LINAK Slovakia s.r.o.  
Phone: +421 517563 414 · Fax: +421 517563 410  
E-mail: jp@linak.sk · www.linak.com
- **USA**  
LINAK U.S. Inc.  
North and South American Headquarters  
Phone: +1 502 253 5595 · Fax: +1 502 253 5596  
E-mail: info@linak-us.com · www.linak-us.com

**SUBSIDIARIES**

- **AUSTRALIA**  
LINAK Australia Pty. Ltd.  
Phone: +61 3 8796 9777 · Fax: +61 3 8796 9778  
E-mail: sales@linak.com.au · www.linak.com.au
- **AUSTRIA**  
LINAK GmbH  
Phone: +43 (0) 2746 210 36 · Fax: +43 (0) 2746 210 44  
E-mail: sebastian.karl@linak.at · www.linak.at
- **BELGIUM & LUXEMBOURG**  
LINAK Actuator-Systems NV/SA  
Phone: +32 (0)9 230 01 09 · Fax: +32 (0)9 230 88 80  
E-mail: info@linak.be · www.linak.be
- **BRAZIL**  
LINAK do Brasil Comércio de Atuadores Ltda.  
Phone: +55 (11) 2832-7070 · Fax: +55 (11) 2832-7060  
E-mail: info@linak.com.br · www.linak.com.br
- **CANADA**  
LINAK Canada Inc.  
Phone: +1 905 821 7727 · Fax: +1 905 821 4281  
E-mail: info@linak.ca · www.linak.ca
- **CZECH REPUBLIC**  
LINAK C&S S.R.O.  
Phone: +420581741814 · Fax: +420581702452  
E-mail: ponizil@linak.cz · www.linak.cz
- **DENMARK**  
LINAK DANMARK A/S  
Phone: +45 86 80 36 11 · Fax: +45 86 82 90 51  
E-mail: linak@linak-silkeborg.dk · www.linak.dk
- **FINLAND**  
LINAK OY  
Phone: +358 10 841 8700 · Fax: +358 10 841 8729  
E-mail: linak@linak.fi · www.linak.fi
- **FRANCE**  
LINAK FRANCE S.A.R.L.  
Phone: +33 (0)2 4136 3434 · Fax: +33 (0)2 4136 3500  
E-mail: linak@linak.fr · www.linak.fr
- **GERMANY**  
LINAK GmbH  
Phone: +49 6043 9655 0 · Fax: +49 6043 9655 60  
E-mail: info@linak.de · www.linak.de
- **INDIA**  
LINAK A/S India Liaison Office  
Phone: +91 120 4273708 · Fax: +91 80 2224 3863  
E-mail: info@linak.in · www.linak.in
- **IRELAND**  
LINAK UK Limited  
Phone: +44(0)121 544 2211 · Fax: +44(0)121 544 2552  
E-mail: sales@linak.co.uk · www.linak.co.uk
- **ITALY**  
LINAK ITALIA S.r.l.  
Phone: +39 02 48 46 33 66 · Fax: +39 02 48 46 82 52  
E-mail: info@linak.it · www.linak.it

- **JAPAN**  
LINAK K.K.  
Phone: +81 45 533 0802 · Fax: +81 45 533 0803  
E-mail: linak@linak.jp · www.linak.jp
- **MALAYSIA**  
LINAK A/S Asian Representative Office  
Phone: +60 4 210 6500 · Fax: +60 4 226 8901  
E-mail: info@linak-asia.com · www.linak-asia.com
- **NETHERLANDS**  
LINAK Actuator-Systems B.V.  
Phone: +31 76 5 42 44 40 · Fax: +31 76 5 42 61 70  
E-mail: info@linak.nl · www.linak.nl
- **NEW ZEALAND**  
LINAK New Zealand Ltd.  
Phone: +64 9580 2071 · Fax: +64 9580 2072  
E-mail: nzsales@linak.com.au · www.linak.co.nz
- **NORWAY**  
LINAK Norge AS  
Phone: +47 32 82 90 90 · Fax: +47 32 82 90 98  
E-mail: info@linak.no · www.linak.no
- **POLAND**  
LINAK Polska  
Phone: +48 (22) 500 28 74 · Fax: +48 (22) 500 28 75  
E-mail: dkreh@linak.dk · www.linak.pl
- **SPAIN**  
LINAK Actuadores S.L.  
Phone: +34 93 588 27 77 · Fax: +34 93 588 27 85  
E-mail: linakact@linak.es · www.linak.es
- **SWEDEN**  
LINAK Scandinavia AB  
Phone: +46 8 732 20 00 · Fax: +46 8 732 20 50  
E-mail: info@linak.se · www.linak.se
- **SWITZERLAND**  
LINAK AG  
Phone: +41 43 388 31 88 · Fax: +41 43 388 31 87  
E-mail: info@linak.ch · www.linak.ch
- **TAIWAN**  
LINAK A/S Taiwan Representative Office  
Phone: +886 2 25080296 · Fax: +886 2 25083604  
E-mail: info@linak.com.tw · www.linak.com.tw
- **TURKEY**  
LINAK A/S Turkey Representative Office  
Phone: +90 312 4726338-59 · Fax: +90 312 4726635  
E-mail: vozen@linak.com.tr · www.linak.com.tr
- **UNITED KINGDOM**  
LINAK UK Limited  
Phone: +44(0)121 544 2211 · Fax: +44(0)121 544 2552  
E-mail: sales@linak.co.uk · www.linak.co.uk

**DISTRIBUTORS**

LINAK is represented in the following countries:

- ARGENTINA
- COLOMBIA
- INDONESIA
- IRAN
- MEXICO
- RUSSIAN FEDERATION
- SINGAPORE
- SOUTH AFRICA
- SOUTH KOREA
- UNITED ARAB EMIRATES

For contact details on other countries please visit [www.linak.com](http://www.linak.com) or contact:

- **LINAK INTERNATIONAL**  
Fax: +45 74 45 90 10  
E-mail: info@linak.com · www.linak.com

**A HISTORY OF TRADITION AND INNOVATION**

*LINAK has gone through a remarkable transformation since being established back in 1907. When Bent Jensen, CEO and Owner took over the company in 1976 he brought a brand new idea with him. An idea which led to the development of the very first linear actuator in 1980.*

*It soon became obvious that this new invention had an even larger potential than anyone could have imagined. The linear actuator was going to facilitate ergonomic improvements in workplaces as diverse as offices, hospitals, comfort furniture, farms, and industry.*

*Throughout this process of improvement and transformation, LINAK's commitment to quality remains the same. The quality of our products affects the quality of people's lives, and we are very much aware of our responsibility. All products are thoroughly tested according to the most demanding standards, and all assembly processes utilize modern technologies.*

*As we have grown, so has our network of international offices around the world. Today we are present in 35 countries across the globe.*