



OCI and iProcurement



You probably already have your own product-ID's in your IT-system. With other wholesalers, you have to change these IDs when you change wholesaler. Not with Solar.

Solar's SAP Open Catalogue Interface (OCI) and Oracle iProcurement are two ways of achieving the same goal: a seamless joining of systems – yours and ours.

Joint systems mean that Solar's information is always accessible to you.

From prices to delivery times, everything is constantly updated. What you view in the system is what is currently available.

Joint systems also simplifies the order process. You only place the order once, in your own system. When you receive the invoice from Solar the order is already in your system and its status easily updated. Joint systems. Joint forces. We are stronger together.





OCI & iProcurement

– your system interface to Solar

Solar WebLink enables you to order products from Solar regardless of whether you operate via an OCI or iProcurement system. Once your procurement system has been configured with WebLink, the two systems are joined together. All our product information such as prices, delivery times, etc., will then be available to you – online real-time. What you see on your screen, is what currently is available.

Two systems, one operation platform SAP Open Catalog Interface and Oracle iProcurement are the two most widely used electronic procurement systems in the world to day. They offer an efficient and flawless platform for advanced electronic order processing.

With OCI or iProcurement your ERP system communicates directly with Solar. You are able to gather all the required data on products you want to order directly from the Solar database. The data are subsequently channelled back to your own procurement system from where the order can then be processed.

Small differences

OCI and iProcurement are basically almost identical; however, there are some small differences in the way the two systems operate with the Solar WebLink platform. With Oracle iProcurement, a login request is sent to Solar WebLink, which then validates whether the user has access to the system or not. In the affirmative, a confirmation is transmitted to the iProcurement system, which then logs on via the URL address contained in the confirmation. The SAP OCI system is from the start configured with the URL address, which must be used for all transactions.

Easy set up

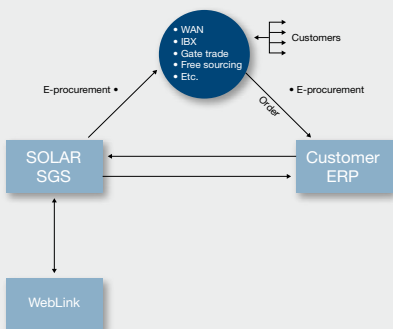
Once a user has been set up to operate in Solar WebLink via OCI or iProcurement, an operation policy must be established. This policy can be used to determine where in WebLink the user wants to enter the system. There are three possibilities: Frontpage/Main Menu; Search for Products (advanced); or the Catalogue selection. Several users may share the same policy, or each can have its own.

When operating in Solar WebLink via OCI or iProcurement, many of the features normally available in WebLink will not be active. Only 'Search for products' and the catalogue pages are available. Depending on how the set up is configured for the individual users, it is, however, still possible to set up individual favourite indexes and other special features.

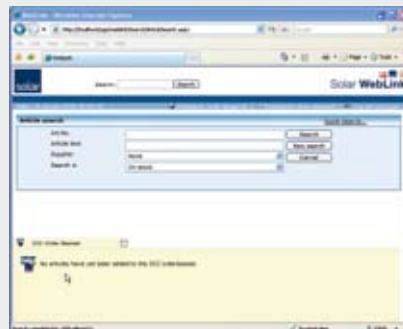
Simplified ordering process

When ordering via your own OCI or iProcurement system, the order is automatically registered in the Solar WebLink system. Subsequently, when you receive the invoice, the order is already registered in your system.

It is as simple as that.



Example: OCI & iProcurement working procedure



Example: WebLink article search



Example: WebLink OCI & iProcurement ordering basket