



private safaris

SPRING-SUMMER 2011

Explore Africa

OUT OF THE ORDINARY
TOURS FOR EVERYONE

*Great Outdoors · Local Customs · Charming Hospitality ·
Traditional Cooking · Stimulating Art · Intriguing Architecture*





OUT OF THE ORDINARY
TOURS FOR EVERYONE

Our programmes take individual and small group travel in a new direction. They are for travellers who don't want to again experience what everyone else already has.

They are for the seekers of a truly authentic and sustainable travel experience in the great outdoors, of local customs and charming hospitality, flavourful traditional cooking, stimulating art, and intriguing architecture.

COME EXPLORE WITH US.

Mount Kenya Transverse Sirimon–Chogoria Route

HIGHLIGHTS

- › Mountain hiking with spectacular views
- › Wildlife viewing

This itinerary combines some of the most splendid routes on Mount Kenya. Using one of the gentlest ascent trails to the peaks, and with an extra acclimatisation day included at 4200 metres above sea-level, it has a huge summit success record. Pass through montane forest, bamboo, heather, and moorland zones to peaks; then down past spectacular jagged peaks,

glaciated U-shaped valleys, deep gorges and waterfalls.

› Mount Kenya-climbing is fascinating and magnificent. Climbing experts will help you to navigate the steep icy rocks and valleys. The climb takes you to the heart of the mountain, penetrating bushland, moorland and rare sites of resident wildlife. The mountain has

glaciers, springs, plains, endangered species and a park within.

› Guests looking for a challenge, can aim for the mountain's pinnacle, a deed which involves extensive rock-climbing ability. But no worries for guests who simply want to soak up the mountain's atmosphere, and its magnificent, peaceful and serene sights.

› Mount Kenya is the second highest mountain in Africa next to Kilimanjaro. Nelion, Batian, and Point Lenana are three of the mountain's utmost summits. It is an extinct volcano, which dominates the Central Kenyan highlands, towering just seventy miles north of Nairobi and ten miles south of the Equator. The mountain is known for its beauty and height, towering above the landscape. It is home to many tribes and is the site of Mount Kenya National Park.

› The highest summits are a pair of rocky snow-capped peaks: Batian at 5199 and Nelion at 5188 metres above sea-level. The two peaks are separated by a narrow gap and surrounded by an intricate system of peaks and ridges, with many high glaciers.

› More technically difficult to climb compared to Mount Kilimanjaro, Mount Kenya offers some of Africa's finest rock and ice-climbing. The mountain is heavily forested, and its ecological diversity is one of its primary attractions. A variety of plant life grows on the slopes, including camphor, cedar and bamboo. Elephant, rhino, buffalo and leopard roam the surrounding areas. A Mount Kenya climb is, in simple words, astounding.

› After the adventure on the icy rocks, the safari termination is in Nairobi city.





2

- 1 · Mount Kenya
- 2 · Mount Kenya National Park
- 3 · Mountain climb
- 4 · Valley



3



4

Travel Period	All year round
Travel Duration	6 days/5 nights
Group Size	2 to 6 clients
Included in the Tour	All transport including all fuel expenses. All meals and services of a cook. Accommodation (a combination of both camping and bandas), and all camping equipment. Services of a driver guide, mountain guides and porters. Park entry fees. Flying doctors coverage.
Excluded from the Tour	International and domestic flights plus airport taxes. Visa fees. Personal expenses like drinks, tips and gratuities. Personal and baggage insurance. Optional activities and excursions.

Programme subject to change.

Laikipia Camel Explorer

HIGHLIGHTS

- › On this safari, learn to ride a camel the Samburu way
- › Meet the Samburu people and learn about their culture
- › An adventure of a lifetime



This is a totally tailor-made safari, which aims to open up the more inaccessible regions of Laikipia through individualised exploratory camel safaris. The starting point is determined in advance according to the weather, environment and wildlife movements. We have the luxury of being able to offer an exploratory walk from 3 to 8 days or more, depending on your preferences.

- › Imagine arriving in Nairobi, and just a few minutes after leaving the airport, entering the only national park in a capital city. Your adventure now begins in Kenya's oldest national park.
- › Your first stop will be the authentic bush camp, the Nairobi Tented Camp. Your appetite for wildlife, camping and wilderness will have been

sufficiently whetted by now.

- › You will then fly to Northern Kenya, to one of the four starting points, by a light aircraft or helicopter. There you will meet your camels, handlers and guide. The guide will either be Andrew, Guy or one of the chosen guides, who have exceptional knowledge of their surrounding wildlife, birds and landscapes.
- › Along the route, days will be spent walking with the camels and their Samburu herdsman down old stock-routes, through dried out "sand luggas", along beautiful river valleys, and up rocky outcrops, with nothing but pure Africa stretched out in front of you for as far as the eye can see.
- › Wake up every morning and read the "bush" news on the many paths and trails around the camp to find out what happened during the night.

- › Laikipia is home to a diverse range of wildlife, and we hope to spot elephant, giraffe, oryx, zebra, kudu, and hyena; just to name a few.
- › Each evening, along with your new team, comrades and friends for life, you will help pick the next campsite, choosing each spot for its individual charm.
- › Spending your nights in a basic but very comfortable mobile camp, the camping experience is made more special through a team effort where everyone's unique skills and ideas are required.
- › The end of your camel safari adventure will lead you to the luxury of Ol Malo House, with majestic Mount Kenya as its backdrop, before flying back to Nairobi.



2



3

- 1 - Reticulated giraffe
- 2 - Afternoon snooze
- 3 - Moving to lunch
- 4 - Grevy's zebra
- 5 - Camel safari



4



5

Travel Period	All year round
Travel Duration	3–8 days
Group Size	2–6 persons
Included in the Tour	Arrival and departure transfers in Nairobi. Other transfers in Nairobi as per programme. Domestic flights as per programme including taxes. Accommodation, meals, park entry fees as per programme. Flying doctors coverage.
Excluded from the Tour	International flights and airport taxes. Visas. Personal expenses such as drinks, tips, laundry, telephone, fax and email. Personal and baggage insurance. Optional excursions. Tour meals not mentioned in programme.

Programme subject to change.

Laikipia, Masai Mara @ Tana Delta

HIGHLIGHTS

- › Discover Kenya's remote northern parts, the great Mara and the blue waters of the Indian Ocean
- › Feel and taste the diversified culture of the people of northern Kenya

Hosted and guided by Africa's experts, this safari takes you into some of the most remote, beautiful and unspoilt spots that Kenya has to offer. Imagine exploring paradise with the people who know it best, making it an unforgettable, exciting and different adventure. Each day is organised in a manner most suited to your personal interests: from a dawn-walk through giant herds, and lobster dinner atop a sand dune, to sleeping out in the wild with the Turkana warriors.

MAGNIFICENT WILDLIFE

› Fly from Nairobi to Northern Laikipia, home to thousands of elephant, greater kudu and the elusive wild dog. This is a great opportunity to explore and walk close to wildlife, guided by magnificent tribesmen with

their camels.

- › Days of adventure await you while you walk amongst herds of wildlife, quietly absorbing the sights and sounds of the bush. Enjoy surprise bush breakfasts, camel safaris, picnics, game viewing, star-studded nights, river fishing, and experience the bushcraft and skills of the wonderful Laikipiak Maasai.
- › The lodge itself is perched on a cliff overlooking the Ewaso Nyiro River. Open-fronted cottages provide fabulous views. Delicious cuisine and tranquil decks invite you to some serious relaxation.
- › From northern Kenya, this tour takes you to the home of the great migration and a people who are very closely related to the northerners: the Maasai.

PRIVACY AND EXCLUSIVITY

- › We find our way to the charismatic home of Alex Walker. Serian Camp has its own 5000 acre concession especially for walking and with access to the reserve; all of which arguably offer some of the best game viewing in the world.
- › Whilst at Serian, privacy and exclusivity are at your complete disposal with your own vehicle, driver guide and wildlife spotter. Here, there are many activities to choose from: early dawn game drive, walking with warriors, tracking, bird watching, river fishing, a full day out with picnic lunch, night game drives, and bush breakfasts.

UNINHABITED BEACHES

- › From the endless Mara plains, fly to the great blue ocean waters facing

Delta Dunes Lodge. Where the bush meets the beach, 7 open-fronted cottages are perched amongst the sand dunes at the mouth of the Tana River. 60 km of uninhabited and uninterrupted beach are exclusive to the lodge.

- › The dining area is located 100 feet above sea level. Enjoy delicious seafood, ice cold drinks, freshly baked breads and homemade pastas.
- › Over 400 bird species are resident in the delta area, as well as hundreds of hippo and crocodiles. Many activities on offering.
- › After the Delta, sun-kissed and relaxed, fly back to Nairobi.



1



2

- 1 · Open-fronted cottage
- 2 · Outdoor dining
- 3 · Elephant Bull
- 4 · Spectacular view



3



4

Travel Period	All year round
Travel Duration	8–10 days or more
Group Size	2–6 persons
Included in the Tour	All on-ground transport. Services of English-speaking guide and ranger. Accommodation and meals as indicated in the programme. Local flights.
Excluded from the Tour	Visa. International flights. Expenses of a personal nature.

Programme subject to change.

Rustic Africa Safari

HIGHLIGHTS

- › A horseback safari in Amboseli National Park where you can gallop across dried lake and ride close to Kilimanjaro
- › The Chyulus where you can climb the hills and view the gigantic Tsavo National Park

This safari takes you to some of Kenya's finest rugged but beautiful landscapes such as the unexploited and unending hills of the Chyulus. Come face to face with herds of Amboseli elephants. Witness the effects of climate change. And travel from the dry plains to huge rocky outcrops, and from vital rivers to old craters, where salt is mined by hand and brought out by donkeys.

DAY 1, ARRIVAL NAIROBI

› Just a few minutes after leaving Nairobi airport, enter the only national park in a capital city. Your adventure now begins in Kenya's oldest national park. Your first stop will be an authentic bush camp, the Nairobi Tented Camp.

DAY 2, AMBOSELI NATIONAL PARK

› Flight to Amboseli National Park.
 › Game drive on the way to Tall Tree Camp. See elephant, buffalo, hyena, hippo, lion, cheetah, zebra and wildebeest.
 › After lunch, go on a 2 to 3-hour horse ride around the pockets of forest surrounding the camp. Back to camp for sunset.

DAY 3, RIDE TO KOPJE

› After breakfast, set off for a 4-hour ride to a stunning granite rock formation.
 › Picnic in the shade of a huge overhanging bolder. Enjoy the view of Amboseli, Mount Kilimanjaro and Mount Meru.
 › After lunch, ride back to the camp. The day's riding will cover about 30

km, during which we will ride through the Acacia woodlands at the base of Mount Kilimanjaro, where sleeping lion, and browsing elephant abound.

DAY 4, DAWN RIDE AND AFTER-NOON GAME DRIVE

› Early morning horse ride for about 4 hours to the nomadic Maasai.
 › After breakfast, return to camp for lunch.
 › Afternoon game drive.

DAY 5, RIDE THROUGH AMBOSELI TO MOBILE CAMP

› Enter Amboseli National Park on horseback.
 › Ride through the Enkongo Narok Swamp and see elephant, buffalo and plains game. After 7 hours, arrival at Olgulului Ranch.

DAY 6, RIDE FROM OLGULULUI TO MBIRIKANI, LONGERITI CAMP

› Ride to Longeriti Camp, about 40 to 50 km, with a picnic lunch en route.
 › Cross Acacia scrubland.
 › Sunset game drive or walk in the evening.

DAY 7, MIST FOREST

› Drive to Chyulu Hills.
 › Head to the mist forest for a walking safari. Picnic lunch en route.
 › Return to camp for a horse ride, walk or game drive.

DAY 8, CHYULU / NAIROBI

› Breakfast, flight to Nairobi.



1



2

- 1 - Tented camp
- 2 - Approaching the Chyulus
- 3 - Amboseli elephant
- 4 - Picnic



3



4

Travel Period	All year round
Travel Duration	8 days / 7 nights
Group Size	2–6 persons
Included in the Tour	Arrival and departure transfers in Nairobi. Other transfers in Nairobi as per programme. Domestic flights as per programme, including taxes. Accommodation, meals and park entry fees as per programme. Flying doctors coverage.
Excluded from the Tour	International flights and airport taxes. Visas. Personal expenses such as drinks, tips, laundry, telephone, fax and email. Personal and baggage insurance. Optional excursions. Tours and meals not mentioned in the programme.

Programme subject to change.

Mount Kilimanjaro Climbing

HIGHLIGHTS

- › Mountain hiking on the “roof of Africa” with spectacular views
- › Forest exploration
- › Wildlife viewing

Navigate different routes on the chilly mountain. Ascend a cleared ridge trail or along the forest trail, and descend on the main trail. The forest trail branches off to where you can see wildlife or enjoy the forest. Halfway, you can cross the stream and rejoin the main trail, or continue on the forest trail. Both trails continue on opposite sides of the stream,



merging at 1830–2700 metres above sea-level after about 3 to 4 hours of trekking.

- › Mount Kilimanjaro, the roof of Africa, in Tanzania, is Africa’s highest mountain at 5895 metres above sea-level, and sits within the Kilimanjaro National Park. It is the world’s highest walkable mountain.
- › Heading up, you pass through five distinct vegetation zones that get progressively colder, drier, and less vegetated. Towards its summit, Kilimanjaro has numerous glaciers despite being just three degrees south of the equator. Its ice-covered summit is named Uhuru Peak. Uhuru means “freedom” in Swahili.
- › There are several routes up Kilimanjaro Mountain, each with different terrain and scenery.

Machame Route is the most scenic route up Kilimanjaro, particularly the traverse below the Western Breach. Few people climb by this route.

- › Lemosho Route offers a very good chance of success as you get a lot of time to acclimatise to the altitude. Ascending via Stella Point, it is even less frequented than the Machame Route.
- › The Marangu Route is the shortest route up Kilimanjaro. It is the most frequented and developed route, with the hardest final climb via Gilman’s Point. Limited time for altitude acclimatisation.
- › The Rongai Route is logistically awkward, starting on the northern, Kenyan side of Mount Kilimanjaro. It is a steep climb for the first couple of days, with little attractive scenery. The final climb is via Gillman’s Point

and the descent is by the Marangu route, making it a relatively hard and busy route.

- › The Umbwe Route is a short but more difficult route to Uhuru peak, with a particularly hard first day’s climb. There is also less scenery when compared to the Machame and Lemosho routes, and you do not see much of Kilimanjaro itself.
- › The Mweka Route is used as a descent from Kilimanjaro only.
- › After the climb on the icy rocks, the tour ends in Arusha.



2

- 1 - Climbing to the summit
- 2 - Mount Kilimanjaro
- 3 - Uhuru Peak
- 4 - Glaciers in sight



3



4

Travel Period	All year round
Travel Duration	Depends on the route
Group Size	2 to 6 clients
Included in the Tour	All transport including all fuel expenses from the park gate. All meals, cooking facilities and services of a cook. Camping accommodation and all camping equipment. Services of a guide and porter, services of mountain guides and porters. Climbing permit. Park entry fees. Flying doctors coverage.
Excluded from the Tour	International and domestic flights plus airport taxes. Visa fees. Mountain gear. Hyperbaric chamber including porter to carry. Toilet tent including porter. Oxygen cylinder for entire climb. Extra porter. Personal expenses like drinks, tips, gratuities. Personal and baggage insurance. Optional activities and excursions.

Programme subject to change.

Tanzanian Secrets embedded in Culture

HIGHLIGHTS

- › Wildlife viewing
- › Meet the Maasai and the Datoga village
- › Visit a pre-historic site

Tanzania is a mélange of different cultures, emanating from the interaction of the early visitors on the East African coast with the local population. There are more than 130 tribes in Tanzania, reflecting a rich cultural diversity. Kiswahili is the national language spoken by all tribes in Tanzania, and used widely in other eastern and central African



countries. During this eight-day cultural interaction safari, you will visit the Maasai people and the Datoga Tribe.

DAY 1, ARRIVAL KILIMANJARO AIRPORT

- › Transfer to The River Trees Hotel.
- › Afternoon departure to visit the Ilkurot Boma, which is 20 km from the town of Arusha. This visit will include a Maasai Boma and a Maasai Holy Tree.

DAY 2 TO 4, OLDUVAI

- › Visit Ngorongoro Crater for an early lunch and descend into the crater for a game drive before heading to Olduvai Camp for dinner and overnight.
- › On day two, depart for an extensive tour of the Olduvai Gorge area, which will include a visit of the Olduvai

Gorge archeological museum. In the afternoon, depart for a game drive en route to the camp.

- › On day three, there will be a full day of game viewing in the central Serengeti and Ndutu areas.

DAY 5 TO 6, LAKE EYASI

- › Depart for Kisima Ngeda Camp in Lake Eyasi and arrive in time for lunch.
- › In the afternoon, depart for a guided bird walk around the camp, followed by a sundowner before returning to the camp for dinner and overnight.
- › After breakfast, join the Datoga tribesmen on an adventurous day of hunting and gathering of wild fruits. Late return to the lodge.

DAY 7 TO 8, LAKE MANYARA

- › Drive to Migunga Camp in Lake Manyara. Arrival at the camp will be at

around lunch time. Lunch at the camp.

- › In the afternoon, enjoy a game drive in the park before proceeding to the camp for dinner and overnight.
- › Day two, depart for a morning hike in Lake Manyara before driving to Mto wa Mbu for lunch at a local restaurant. After lunch, drive back to camp for an afternoon at leisure.
- › Depart for a night game drive in Lake Manyara National Park.

DAY 9, ARUSHA - OUTBOUND

- › After breakfast, return to Arusha for lunch at the Shangaa Restaurant before transfer to the airport for outbound flight.



- 1 · Walkway to tent
- 2 · Ndega
- 3 · Wildlife
- 4 · Tent exterior
- 5 · Sleeping lion



Travel Period	All year round
Travel Duration	9 days/8 nights
Group Size	2–6 persons
Included in the Tour	All on-ground transportation with the services of an English-speaking driver guide. All meals as indicated in the programme. All cultural visits, game drives and activities as indicated in the programme.
Excluded from the Tour	International flights and taxes. Visas. Any expenses of personal nature such as drinks. Personal insurance and baggage insurance. Optional excursions. Other tours and meals not mentioned in the programme.

Programme subject to change.

On the unbeaten tracks of Tanzania

HIGHLIGHTS

- › Explore the history of Tanzania
- › Hiking, wildlife viewing and chimpanzee tracking
- › Local village visits

Naturalists have written volumes in praise of the pristine beauty of Tanzania and the need to preserve the game sanctuaries and the historical sites, of which some date as far back as two million years. With over a quarter of its total area of 945 087 km² set aside for game parks and reserves, Tanzania boasts some of the finest wildlife sanctuaries in



the world. Serengeti, Ngorongoro, Tarangire, Lake Manyara, Mount Kilimanjaro, Mikumi, Ruaha and the Selous are the ultimate sites.

DAY 1, ARRIVAL KILIMANJARO AIRPORT, TANZANIA

› On arrival at Kilimanjaro International Airport, you will be met by our airport representative who will assist you with immigration formalities. You will then be introduced to your safari driver guide who will transfer you to the Hatari Lodge.

DAY 2, HATARI LODGE

› The history of the Hatari Lodge dates back slightly over 100 years, when Margarete Trappe arrived on an ox wagon from the coast in 1906. Her journey took her through Momella, now part of the Arusha National park. She

“fell in love” with the area and set up a new home here. The Trappe family built a large farm where they kept cattle, horses and goats. Margarete passed away in 1957 and her son Rolf took over the management of the farm. Rolf leased the property to paramount pictures as the setting of the classic movie “Hatari” starring John Wayne. Hardy Kruger bought the property in 1960, the same year that this area was gazetted as a national park, now known as the Arusha National Park. Hardy Kruger’s dream of owning a farm in Africa had come true. He owned the property for 13 years.

› After an early breakfast, depart for a morning game drive in the park. You will then drive out of the park and head to Arusha Town for a visit of the Old German Boma (museum).
› In 1899, the Germans began

construction of a strong fortification, a boma, which they forced the wa-Arusha to build. Maasai in Arusha still remember the humiliation of this task: the new colonists took pleasure in riding around on the backs of the Arusha and Maasai men, egging them on with whips. One Maasai recorded the growing resentment at this form of transport in his memoirs. He was particularly enraged by an unusually heavy cargo: passing the river with his charge set heavily across his back, his patience snapped and he tossed his “master” into the water. Fearing the consequences, many Maasai went into hiding in the bush, until a Maasai chief was sent to find them. The chief explained to the mutinous group that he was acting as a mediator, and that if the group returned to work all would be forgiven. The runaways marched

back into the new town in a column of about 400 men. As they strode down Boma Road, the entire troop was gunned down in the street. This is one of history's many warnings to never trust a "safe conduct". It is said that the "mediator" was promptly promoted. The bloodstained fort was completed in 1900 and became a barracks for 150 Nubian soldiers. Later, it was made the regional government offices until 1934, when it was turned into the Arusha Museum of Natural History.

- ▶ Lunch will be at the Shangaa Restaurant. The restaurant supports physically challenged men and women living around Arusha. They make beads out of recycled bottles and sell them to visitors to make a living.
- ▶ After lunch, drive to the Arusha Declaration Museum. This museum was opened to the public in 1977. The Museum holds several displays and exhibitions portraying the glorious struggle of the people of Tanzania. The history here is about the fight for sovereignty, the majestic and glorious history and the political expansion of Tanzania.
- ▶ Drive back to Hatari Lodge, and if time allows, you will have a game drive en route to the lodge.

DAY 3 TO 5, MAHALE

- ▶ After an early breakfast, transfer to Arusha Airport for flight to Mahale.
- ▶ On arrival, you will be met by the lodge representative and transferred to your lodge.
- ▶ Mahale lies on the eastern shore of Lake Tanganyika and is the least accessible of Tanzania's 14 national parks. This may be a blessing, as its remoteness helps protect the population of over 700 chimpanzees as well as the parks rugged grandeur. Mahale was gazetted as a national park in 1985 and covers 1613 km². Mahale is a walking and camping park. The park can only be accessed by boat on Lake Tanganyika, which is the longest and second deepest lake in the world. The breathtaking scenery of this park will leave you with fond memories of this trip. You will spend the next three nights of your journey here.
- ▶ Greystoke Mahale is within hiking distance of the 60 strong M-group, one of the most habituated groups of chimpanzees in the world, making Greystoke one of the world's premiere locations for observing and photographing these great apes. Experienced trackers and guides make the going easy. Hiking through the beautiful forest is something special,



as it is the home of eight other species of primate, shy forest mammals, birds, butterflies, giant vines and waterfalls. Outside the forest, the beach is ideal for sun worshipping and relaxing, while the lake yields many other activities.

- ▶ Accommodation at Greystoke Mahale is in exotic barefoot luxury "bandas" beneath shady trees on the edge of the beach, with extraordinary and luxurious interiors, made out of recycled dhow timber, with a mix of space, great style and deep comfort.
- ▶ All the activities will be lined up by the camp and communicated to you every evening.
- ▶ Meals will be served at the camp.

DAY 6 TO 9, KATAVI

- ▶ After breakfast, board a flight to Katavi. On arrival, you will be met by the camp personnel and transferred to Katavi Wildlife Camp. This will be your base camp and home for the next four nights.
- ▶ Katavi Plains is noted for its spectacular dry season wildlife. Nowhere else in Tanzania, other than Katavi, are you more likely to see the rare and endangered puku antelope, the black sable antelope the roan antelope, and the ferocious hunting dogs. Founded in 1974, Katavi National Park currently covers an area of 4 471 km², making it the third largest national park in Tanzania.

- ▶ Wildlife viewing and guided game walks are some of the highlights of your stay at Katavi Wildlife Camp.
- ▶ The camp has 8 well-placed tents built on wooden platforms, and are shaded by extended thatched roofs that keep the rooms cool during hot months. Katavi Wildlife Camp is set back amongst the trees fringing the Kitasunga Plain. Katuma River, which is close by, offers a daily parade of animals as they come to drink water. The bar lounge offers perfect views of the plains, where many lion kills have been witnessed.
- ▶ Day-to-day activities will be organised by the camp.
- ▶ Mobile camping can also be pre-booked for a minimum of two nights.

DAY 10 TO 12, SELOUS

- ▶ After breakfast, board a flight to Selous Game Reserve. On arrival, you will be met and transferred to Rufiji River Camp.
- ▶ Rufiji River Camp will be your overnight stay for the next three very exhilarating nights.
- ▶ Accommodation at this camp will include guided morning and evening or full-day game drives, boat or walking safaris. The choice is yours.
- ▶ An optional tour to the Mloka village

can be arranged.

- ▶ The Selous is known in Swahili as Shamba la Bibi, which literally translated means "women's garden". The reserve is 48 000 km², covering almost six percent of Tanzania's land surface. The reserve was named after Captain Frederick Courtney Selous, a legendary 19th century naturalist, explorer and hunter. Selous Game Reserve was founded in 1905. It is situated in the southern part of Tanzania, bordered by Mikumi National Park to the northwest and by Udzungwa Mountains National Park and Kibasira Swamp to the west. The greater part of northern Selous is reserved for photographic safaris, and it is one of the most beautiful and game rich areas in the whole ecosystem.

DAY 13 TO 14, BAGAMOYO

- ▶ Your last two nights exploring off the beaten tracks of Tanzania will end with a historical experience in Bagamoyo.
- ▶ Bagamoyo was once the gateway for merchants trading with the Swahili people of the coast, the exit point for slaves and ivory from the interior and the entry point for the European explorers of the "Dark Continent", as all of Africa was then known.
- ▶ Fortunately, Bagamoyo may become

a World Heritage Site in order to help conserve and protect the coastal settlement's fascinating Gothic and Afro-Arabic architecture and history. Tourist attractions include the Kaole ruins dating back to the 12th century, thought to mark one of the earliest contacts of Islam with Africa; the Old Fort built in 1860 for holding slaves before shipment to Zanzibar; the first Roman Catholic Church in East Africa built around 1868, and used as a base to run a camp of about 650 freed slaves; the German colonial administration headquarters, the Boma, in the first capital of German East Africa; the Mission Museum displaying the history of Bagamoyo; and the Livingstone Memorial Church, among others. Bagamoyo's white sand beaches are considered some of the finest on the whole of the East African coast.

- ▶ On arrival at the airport in Bagamoyo, you will be met and transferred to Lazy Lagoon, which lies in the Zanzibar Channel, off shore from mainland Bagamoyo. The coastline boasts nine kilometres of deserted beach, but it is also a natural reserve and home to many small mammals, mangrove trees and patches of indigenous forest. An idyllic Robinson Crusoe Island, and the perfect way to end your exploration of

Tanzania.

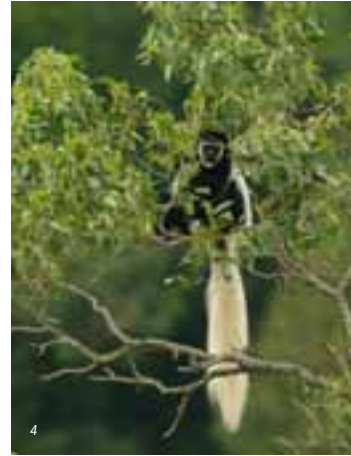
- ▶ The afternoon will be at leisure.
- ▶ The next day, you will depart for a tour of Bagamoyo, which will include the Kaole Ruins, the old fort, the first Roman Catholic Church built in East Africa, the German colonial administration and the Livingstone memorial church, before returning to your beach resort to enjoy the rest of the afternoon.

DAY 15, DAR ES SALAAM

- ▶ After breakfast, drive to Dar es Salaam.
- ▶ Dar es Salaam, which means "The Haven of Peace" in Arabic, has one of the best deep natural harbours in the world. From a small Swahili town in the middle of the 19th century, Dar es Salaam has grown into a large metropolitan centre with a population of over 3 500 000.
- ▶ Lunch will be served at a local Swahili restaurant. After lunch, depart for a city tour before heading to the Mövenpick Hotel for dinner and your overnight stay.

DAY 16, DEPARTURE FROM DAR ES SALAAM INTERNATIONAL AIRPORT

- ▶ Outbound flight.



- 1 · Hatari Lodge
- 2 · Greystoke Mahale chimpanzee
- 3 · Greystoke Mahale beach from banda
- 4 · Primate
- 5 · Greystoke Mahale lunch on dhow
- 6 · Lion cubs



Travel Period	All year round
Travel Duration	16 days / 15 nights. Tour starts on Saturday.
Group Size	2 – 6 persons
Included in the Tour	All on-ground transportation with the services of an English-speaking driver guide. All meals as indicated in the programme. Visits, game drives and activities as indicated in the programme.
Excluded from the Tour	International flights and taxes. Visas. Expenses of a personal nature such as drinks. Personal insurance and baggage insurance. Optional excursions. Other tours and meals not mentioned in the programme.

Programme subject to change.

White Water Rafting – Jinja and the River Nile

HIGHLIGHTS

- › Tropical bird watching
 - › Water rafting on the River Nile
 - › Village walks, community projects and family float trips
-



This safari takes you from Kenya to Uganda by car, where you will experience the thrill of the African waters and an adventure through Uganda's scenic, diverse and rich landscape. The Pearl of Africa is a compelling destination, and we are delighted to invite you to follow in the footsteps of the early explorers such as John Hanning Speke and James Augustus Grant, to unlock the secrets of this priceless African gem.

- › The town Eldoret is referred to as “the basket of Kenya”, and is characterised by plantations of Maize. The town has fine scenic sites including the Naiberi River. The slopes leading down to the river hold the remnants of what are called Sirikwa holes.
- › From Eldoret, this tour takes you across the Kenyan and Ugandan border

to Jinja Town. Jinja is the second biggest town in Uganda. Jinja was a fishing village that benefited from being located on long-distance trade routes. Up to recently, it was the most industrialised. The River Nile starts its journey from here and stretches for 6400 km, making it the longest river in the world and one which offers one of the best kayaking experiences in world. You will also encounter the Nile crocodiles and rapids as you journey along.

- › The northern section of the River Nile flows almost entirely through desert, from Sudan into Egypt. You will find lush terraces with views of the River Nile, and the trees above support tropical bird life with incredible sceneries. On this amazing river, you will have a rafting adventure at the five “grade 5” rapids, as well as numerous

slightly lesser rapids. Also available are the Bujagali Falls, where optional activities can be done such as kayaking, river-boarding and quad-biking. For the less adventurous, activities such as village walks, community projects and family float trips are available.

- › After the venture, the curtain closes back in Nairobi city.



2

- 1 · Large tree overlooking Nile in Uganda
- 2 · Rafting the River Nile
- 3 · Gorilla
- 4 · Amazing Wildlife



3



4

Travel Period	All year round
Travel Duration	6 days/5 nights
Group Size	2 to 6 clients
Included in the Tour	All transport in Kenya and Uganda, including toll fees for the vehicle and all fuel expenses. All meals and services of a cook. Accommodation and all camping equipment. Services of a driver guide. Flying doctors coverage.
Excluded from the Tour	International and domestic flights plus airport taxes. Visa fees. Rafting charges. A copy of the DVD of clients rafting along the Nile. Personal expenses like drinks, tips and gratuities. Personal and baggage insurance. Optional activities like Kayaking, quad-biking and village walks.

Programme subject to change.



Southern Africa
explore@privatesafaris.com

www.privatesafaris.com

- △ Mountain
- National Park
- * Point of Interest



OUT OF THE ORDINARY
TOURS FOR EVERYONE

Our programmes take individual and small group travel in a new direction. They are for travellers who don't want to again experience what everyone else already has.

They are for the seekers of a truly authentic and sustainable travel experience in the great outdoors, of local customs and charming hospitality, flavourful traditional cooking, stimulating art, and intriguing architecture.

COME EXPLORE WITH US.

Cape Town Jazz Safari

HIGHLIGHTS

- › A discovery of the South African jazz culture in the Mother City
- › A private music performance at the home of one of the jazz artists

Jazz forms an integral part of the South African culture. A mix of as many influences as there are cultures in the country, this music still influences today's South African music. Let one of the musicians tell you about his passion, his stories and success, during a private dinner and performance at his house.

A PASSION FOR CAPE TOWNIAN JAZZ

- › This evening tour will help visitors discover Cape Town's musical diversity.
- › Listen as renowned musicians and jazz lovers share their passion for authentic Cape Town jazz music. Learn about South African jazz's diverse regional origins.
- › Visit the home of a key master musician in Cape Town, such as

composer laureate Mac McKenzie or master pianist Hilton Schilder. Have dinner with them, listen to their stories, and enjoy a private musical performance. If you have an



instrument and want to join in, now's the time.

- › Finally, visit a local, authentic jazz club (only on Mondays, other evenings enjoy a nightcap at a second

musician's home in either Gugulethu, Kuilsriver, Fairways or other areas of the Cape Flats).

1 · Cape Town Jazz

Travel Period	All year round, on Mondays, Wednesdays, Saturdays and Sundays
Travel Duration	4 hours, from 19:00 till 23:00
Group Size	2–8 persons
Included in the Tour	Return transfers from Cape Town city centre. Private music performance with light dinner at a musician's home. On Mondays, club (drinks at the clients' own expense). On other days, visit to a second host (nightcap included). Entrance fees where applicable.
Excluded from the Tour	All other drinks. Expenses of a personal nature. Gratuities. Personal insurances. Any meals not mentioned in the programme. All optional activities. Drinks at jazz club. Expenses of a personal nature.

Programme subject to change.

Philanthropic Cultural Tour

HIGHLIGHTS

- › An insight into South Africa
- › Contextualising the social issues which South Africa is facing
- › Meeting people responsible for these social development projects



This tour offers an in-depth insight into the history of South Africa, while contextualising the social issues facing South Africa, the townships, issues related to politics, the economy and health. Meet the people who are responsible for social development projects aimed at dealing with these issues. Book this tour and take part in a philanthropy project.

SOCIAL DEVELOPMENT PROJECTS

- › Visit three different projects in the Cape Town region.
- › Your tour could include a visit to a foundation for the development of youths or home-based care for orphans; introduction of music and dance to underprivileged children; an empowerment project, which focuses on the production of pre-cuts from

dry tea bags; a township theatre for raising awareness of local issues through the use of arts and drama; or possibly visiting a foundation which supports people with HIV/AIDS.

- › The tours are interactive. You will meet the people who are responsible for these projects. You will have the

opportunity to learn about their work and way of life, first hand.

- › The visits included in this half-day tour are tailor-made on a daily basis, depending on the availability of the various projects and their current activities.

1 · Orphanage

Travel Period	All year round, Monday to Saturday
Travel Duration	4 hours
Group Size	Minimum 2 persons
Included in the Tour	All excursions and entrance fees as per programme. Transport in an A/C vehicle with an English-speaking driver guide.
Excluded from the Tour	Visa fees. All drinks. Expenses of a personal nature. Gratuities. Personal insurances. All flights (international, regional or domestic), airport and departure taxes. All meals. All optional activities.

Programme subject to change.

Wine Connoisseur

HIGHLIGHTS

- › Cape Winelands “Big Five” wine tasting
- › A specialist wine guide will take you to discover South Africa wine culture
- › Formal wine tasting with a wine maker at one of the fine wine estates of the region

The Cape Winelands are steeped in history and culture, with some vineyards as old as 300 years, and are divided into various regions. Each wine region offers an individual “wine route”. The most popular and well-known are Constantia, Stellenbosch, Franschhoek, Wellington and Paarl. Indulge in the tasting of some of the finest wines in the country



and discover this New World wine industry.

DAY 1

- › In the morning, pick up from your Cape Town-based hotel by a specialist wine guide.
- › Full day tour along the Cape Peninsula and in the Constantia Winelands, the birthplace of South Africa’s wine industry.
- › Visit Groot Constantia Wine Estate. Established in 1685, it is one of the oldest wine estates in South Africa. Enjoy a tour of the estate and wine tasting.
- › Visit Klein Constantia Wine Estate for a tasting of their award winning dessert wine, Vin de Constance.
- › Travel along the beach road to the Cape Winelands and your overnight accommodation.

DAY 2

- › Travel along the Stellenbosch wine route.
- › Visit Warwick Wine Estate for a panoramic “Big 5 Wine Safari” in open 4x4 vehicles. The “Big 5” grape varieties are: Cabernet Sauvignon (“lion”), Cabernet Franc (“elephant”), Pinotage (“buffalo”), Sauvignon Blanc (“rhino”) and Merlot (“leopard”).
- › Travel south of Stellenbosch to the famous wine estate Rust en Vrede, which specialises in Shiraz, Cabernet and Merlot red wines. Enjoy lunch in their award winning restaurant.
- › End the day at Waterford Estate and indulge in a series of dark and milk chocolates paired with red wines and a natural sweet wine.
- › Cape Winelands accommodation.

DAY 3

- › Tour the Swartland Wine Route.
- › Visit a local wine and olive estate.
- › Continue to Wellington for a visit to Savingnac de Versailles, home to a brandy called Savingnac, for a tasting experience and cellar tour.
- › Stop at Fairview Wine Estate in Paarl to enjoy an informal wine and cheese tasting followed by lunch at their restaurant Goatshed.
- › In the evening, return to Cape Town for your onward travel arrangements.



2



3

- 1 · Warwick landscape
- 2 · Rust en Vrede – Stellenbosch First Growth
- 3 · Savingnac de Versailles cellar tour
- 4 · Savingnac de Versailles
- 5 · Warwick



4



5

Travel Period	All year round
Travel Duration	3 days / 2 nights
Group Size	Minimum 2 persons
Included in the Tour	Accommodation, meals, all excursions and entrance fees as per programme. Transport in a luxury A/C vehicle. Services of a Cape Town-based, English-speaking driver guide from day 1 to 3.
Excluded from the Tour	Any visa fees for clients. All drinks. Expenses of a personal nature. Gratuities. Personal insurances. All flights (international, regional or domestic), airport and departure taxes. Any meals not mentioned in the programme. All optional activities.

Notes: The majority of wine estates in the Paarl, Franschhoek and Stellenbosch region are open Saturday mornings. Only few wine estates remain open Saturday afternoons and Sundays.

Hoerikwaggo Trail

HIGHLIGHTS

- › Hoerikwaggo is the original Khoisan's name for Table Mountain
- › Walk from Cape Point to Cape Town, in the footsteps of the Khoisan and discover the beauty of an ancient mountain chain

Situated at the south-western tip of Africa, the Table Mountain National Park encompasses the incredibly scenic Table Mountain range stretching from Signal Hill in the north to Cape Point in the south and the seas and coastline of the peninsula. The Hoerikwaggo Trail is a spectacular 97 km trail from Cape Point to Cape Town. The mountain is home to approximately 1470 species of plants, more than on the entire British Isles.

DAY 1

- › Upon arrival at Cape Town International Airport, transfer to your hotel. After check-in, spend the remainder of the day at leisure.
- › Cape Town accommodation.

DAY 2

- › Travel to the Cape of Good Hope

Nature Reserve. There, meet your guide and start the 4-night "Hoerikwaggo Trail" from Cape Point to Cape Town.

- › Walk approximately 15 km along the False Bay Coast to the old Smitswinkel Bay forest station. Enjoy the vast tracts of fragrant fynbos where buck and other mammals such as the Chacma baboons, reptiles as well as birds roam.
- › Tented camp.

DAY 3

- › A shuttle will take you from the camp to the starting point of this second consecutive day of hiking.
- › The day's hike of 12 km meanders between the summit of Redhill, past Ocean View and down over Slangkop to Kommetjie. Along the way are breathtaking views of Table Mountain

and Cape Point.

- › Tented camp.

DAY 4

- › This is the longest day on the trail.
- › From your camp, walk along Noordhoek and also Long Beach. Look out for oyster catchers, Cape clawless otters, and if you are lucky, you may possibly spot whales and dolphins. Climb the tough Chapman's Peak as well as Noordhoek Peak with their magnificent views of the sea and the mountain range.
- › Tented camp.

DAY 5

- › Starting at the Silvermine Dam, the trail descends Blackburn Ravine before winding north through unspoilt fynbos with stunning views of the Cape Peninsula. It then traverses

Constantiaberg before climbing Vlakkenberg to Constantia Nek.

- › Tented camp

DAY 6

- › Ascend the back table via Disa Gorge and walk through the Valley of the Red Gods to the upper cableway station on Table Mountain.
- › Hikers are carried down by cable car and the trail ends at the lower cable station. From there, transfer to your hotel for a well deserved rest.
- › Cape Town accommodation.

DAY 7

- › Transfer to Cape Town International Airport for your departing flight.



1



2

- 1 - Wash house boma
- 2 - Relaxing with a refreshing drink
- 3 - Learning about Table Mountain
- 4 - Deer Park



3



4

Travel Period	All year round
Travel Duration	7 days/6 nights
Group Size	2-12 persons
Included in the Tour	Accommodation, meals, all excursions and entrance fees as per programme. Accommodation subject to availability at date of booking. We reserve the right to use alternative accommodation of similar standard. Transport in an A/C vehicle with an English-speaking driver. Services of a Cape Town-based English-speaking guide from day 2 to 6. Airport and hotel portorage limited to one suitcase per person.
Excluded from the Tour	Visa fees. All drinks. Expenses of a personal nature. Gratuities. Personal insurances. All flights (international, regional or domestic), airport and departure taxes. Any meals not mentioned in the programme. All optional activities.

Programme subject to change.

Bush @ Wildlife

HIGHLIGHTS

- › Learn how to survive on your own in the African bush
- › Understand the past and present challenges of conservation in Africa
- › Stay in an eco-friendly tented camp and learn to identify the animals of the bush

Absorb the sounds of the “bushveld” on this journey through the South African wilderness. Learn about the various initiatives to ensure the conservation of endangered species such as the rhinos in Hluhluwe-Umfolozi Game Reserve, the Nguni cattle in Swaziland, and the cheetahs at the Hoedspruit Endangered Centre. Explore the “bushveld” during

safari walks and learn new skills like animal tracking, spoor identification and bush survival.

DAY 1, UMHLANGA

- › On arrival at O.R. Tambo International airport, connect to your onward flight to Durban.
- › On arrival in Durban, transfer to your overnight accommodation located in

Umhlanga.

- › Spend the day at leisure and the possibility to enjoy the beach.
- › Umhlanga-based hotel.

DAY 2, ISIMANGALISO WETLAND PARK

- › Travel northwards to the Zulu Kingdom and the game reserves of KwaZulu Natal.
- › Travel to St. Lucia to the iSimangaliso Wetland Park (formerly known as St. Lucia Wetland Park), which is a World Heritage Site in South Africa. Lake St. Lucia is the largest estuarine system in Africa and supports more animal species than the Kruger National Park or the Okavango Delta. Embark on a boat safari to see the hippos and crocodile in the estuary.
- › Continue to your overnight accommodation in Hluhluwe.

DAY 3, HLUHLUWE-UMFOLOZI GAME RESERVE

- › Embark on a full-day game drive in Hluhluwe-Umfolozi Game Reserve, the oldest game reserve in Africa. The game reserve has gained worldwide acclaim for its conservation efforts, mainly for its white rhino conservation programme. Thanks to this effort, the park contains hundreds of endangered black rhino and the largest population of white rhino in the world. This full-day excursion will include a visit to the Centenary Capture Centre, a bench mark for animal capture and sustainable utilisation throughout Africa. See the capture bomas and pens; and visit an audio-visual hall, rhino museum and information centre, which give visitors an opportunity to gain an insight into the role the park plays in conservation.



- › Enjoy lunch in the park.
- › Hluluwe accommodation.

DAY 4, SWAZILAND

- › Travel north to the tiny kingdom of Swaziland.
- › In the afternoon, embark on a game drive in the Mkaya Game Reserve, “Swaziland’s Refuge for Endangered Species”.
- › Swaziland accommodation.

DAY 5, MPUMALANGA

- › Return to South Africa and continue to Mpumalanga.
- › Mpumalanga accommodation.

DAY 6, PANORAMA ROUTE, MPUMALANGA

- › Embark on a tour of the Panorama Route, including a visit to God’s window, Mac Mac Falls and Bourke’s luck potholes.
- › Mpumalanga accommodation.

DAY 7, TIMBAVATI PRIVATE NATURE RESERVE

- › Continue travelling to the Limpopo Province and to the Timbavati Private Nature Reserve, where your overnight tented camp is located.
- › The Timbavati Private Nature Reserve borders the Kruger National

- Park and offers a wildlife experience that ranks with the best in Africa. Kruger National Park is unrivalled in the diversity of its life forms and a world leader in advanced environmental management techniques and policies.
- › After a light lunch, a representative of the camp will give you a brief introduction and history of the Timbavati Nature Reserve.
 - › A late afternoon game drive in an open safari vehicle introduces you to the nocturnal animals
 - › Return to the camp for dinner.
 - › Tented camp.

DAY 8, BUSH SURVIVAL & ASTRONOMY

- › In the morning, your guide will take you for a walk on the reserve with the possibility of tracking one of the “Big Five” on foot.
- › Return to the camp for a “bush craft” session, which will teach you more about surviving in the African bush on your own. You will learn skills like starting a fire, methods of carrying a fire from one location to the next, discovering edible and medicinal uses of indigenous plants.
- › Afternoon game drive, with basic

- astronomy, based on constellations visible at that time of year.
- › Tented camp.

DAY 9, BUSH SURVIVAL & ECOLOGY

- › Put your bush skills into practice and embark on another morning walk to track the elusive “Big Five”.

- › In the afternoon, you will enjoy a second “bush craft” session, where you will learn skills such as making rope from plants, which is strong enough to pull a vehicle, and moulding pottery using clay from the pans.
- › Afternoon game drive with sundowners, focussing on the ecological processes and the role



of the various animals encountered within the greater system.

- › Tented camp.

DAY 10, REPTILE PRESENTATION

- › Early morning bush walk.
- › Afterwards, enjoy a reptile presentation from a reptile expert who will provide you with interesting information about reptiles, first aid for scorpion stings, and snake and spider bites. You will also be able to get a closer look at these various creatures.
- › An afternoon game drive will complete the day. Discuss what animal behaviour can teach you about life.
- › Dinner will be taken in the riverbed, weather permitting. Enjoy a tribal dance during dinner.
- › Tented camp.

DAY 11, MORNING BUSH WALK

- › A last morning bush walk is followed by breakfast at the camp.
- › Depart the camp and travel to your overnight accommodation.
- › Mpumalanga-based accommodation.

DAY 12, HOEDSPRUIT ENDANGERED SPECIES CENTRE

- › Head to the Hoedspruit Endangered Species Centre. The Centre has

established itself as one of the leading private research and breeding facilities for endangered species in the country, with a particular emphasis on the breeding and maintenance of cheetah.

- › A tour will take you to the various enclosures to learn more about these endangered species.
- › In the afternoon, attend a lecture by a specialist about conservation and research that is currently taking place at the centre.
- › Continue to your accommodation in Mpumalanga.

DAY 13, RETURN TO JOHANNESBURG

- › Today, travel back to Johannesburg.
- › Johannesburg accommodation.

DAY 14, DEPARTURE

- › In the morning, transfer to O.R. Tambo International Airport for departing flights.





4



5



6

- 1 · Panorama Route
- 2 · Game drive
- 3 · Walking through "Big 5" territory
- 4 · Lion tracks
- 5 · Rhino
- 6 · Bush craft

Travel Period	All year round
Travel Duration	14 days / 13 nights
Group Size	4 – 9 persons
Included in the Tour	Accommodation, meals, all excursions and entrance fees as per programme. Accommodation subject to availability at date of booking. We reserve the right to use alternative accommodation of similar standard. Transport in an A/C vehicle. Services of a Johannesburg-based English-speaking driver guide from day 1 to 14. Open safari vehicle game drives with English-speaking rangers in Hluhluwe-Umfolozi, Mkhaya, and Timbavati Game Reserves. Airport & hotel portorage (1 suitcase per person).
Excluded from the Tour	Visa fees. All drinks. Expenses of a personal nature. Gratuities. Personal insurances. All flights (international, regional or domestic), airport and departure taxes. Meals not mentioned in the programme. All optional activities.

Programme subject to change.

Horseback riding in the Namib Desert

HIGHLIGHTS

- › Head out at sunrise and enjoy breakfast under a camel thorn tree
- › Gallop into the sunset and enjoy a sundowner with drinks and snacks
- › Ride out into the night and camp in the desert in luxury dome tents



The Desert Homestead has excellent riding horses, all docile and easy to handle. Choose between several outriders options: sunrise, sunset and sleep outs.

Meander across endless plains or discover ancient water courses on a beautifully groomed steed. These are magical and alternative ways to appreciate the surroundings. The final remnants of each day see nature at her most profound. Rugged landscapes bathed in hues of pastel; a truly humbling experience.

THE SUNRISE RIDE

- › Early morning tea and coffee.
 - › Approx. 4-hour ride to scenic breakfast spot.
 - › Return to the lodge.
- Meet at sunrise for tea, coffee and biscuits before driving to the stables.

Once the horses and riders are ready and comfortable, the ride begins. The scenery varies quite dramatically, from dry river beds and massive camel thorn trees, to mountain paths and wide open grassy plains. After about two hours, guests discover a breakfast table under a camel thorn tree, with a delicious continental spread. After a leisurely breakfast, guests mount up and return to the stables.

THE SUNSET RIDE

- › Afternoon tea.
- › Ride through varied terrain for approx. 3 hours.
- › Sundowners with drinks and snacks.
- › Ride back under the stars.
- › Dinner at the lodge.

Enjoy afternoon tea and coffee on the lodge verandah followed by a drive to the stables. The adventure begins as

riders wind their way over the grassy plains, through ancient water courses, and eventually up a steep mountain track where a friendly barman with a selection of cocktails awaits. After yet another magical desert sunset with sumptuous drinks and snacks, guests mount up and slowly make their way back to the stables.

HORSE SLEEP-OUTS

Short or long versions of these sleep outs are available and are dependant on guests' riding experience. Enjoy luxury camping in the desert in dome tents with hot bucket showers, chilled white wine and fine bush cuisine. Horses and camps are designed to suit varied levels, from novice to the more accomplished.



- 1 - Dead tree*
- 2 - The Desert Homestead
- 3 - Namib plains

* Image courtesy of Namibia Tourism

Travel Period	March – December 2011
Travel Duration	Sunset or Sundowner rides: approx. 3 to 4 hours Sleep outs: from 1 to 3 nights
Group Size	Minimum of 2 guests or single supplement applicable
Included in the Tour	<ul style="list-style-type: none"> › The Sunrise Ride: Coffee & tea. 4-hour horseback ride. Picnic breakfast. › The Sunset Ride: Sundowner drinks & snack platter. 3-hour horseback ride. › Sleep out 1–3 nights: Camping gear. Dome tents. Hot bucket showers. Chilled white wine. Fine bush cuisine. Backup team to take care of all logistics. All meals with drinks during meals.
Excluded from the Tour	Visa fees. All drinks. Expenses of a personal nature. Gratuities. Personal insurances. All flights (international, regional or domestic). Airport and departure taxes. Meals not mentioned in the programme.

Programme subject to change.

Rafting in Kaokoland

HIGHLIGHTS

- › Rafting Adventure through Ondorusu Gorge, and from Ruacana to Ondorusu
- › 4-day Rafting Adventure in Epupa
- › 6-day Expedition to Epupa Falls



The Kunene River is Namibia's main white-water rafting destination, boasting the infamous Ondorusa Rapids, waterfalls, crocodiles and adventure. When you are off the river, you can relax in riverside pools, watch the wildlife and soak up the wilderness atmosphere.

- › Companies based in Windhoek organise rafting trips as well as places actually located on the river, like the Kunene River Lodge some 100 km east of the Epupa Falls. Expeditions to the falls include the thrills and spills of the rapids, while shorter local trips explore the Ondorusu Gorge.
- › The Epupa Falls are the highlight of the river. Here, the Kunene breaks up into several channels before hurtling into a deep chasm.
- › The best time to visit is from March to

September, when the heat is bearable and the rapids flow fast.

- › All activities are coordinated and supervised by fully trained Kunene River Lodge Resident Guides, using appropriately equipped support vehicles whenever necessary.



2

- 1 · Rafting
- 2 · Epupa Falls
- 3 · White rapids
- 4 · Kaokoland



3



4

Travel Period	March – December 2011
Travel Duration	1 – 6 days
Group Size	Minimum 4 persons
Included in the Tour	A light lunch, soft drinks & water. Rafting safety gear (helmets & life-jackets). Full training & briefing prior to departure.
Excluded from the Tour	Visa fees. All other drinks. Expenses of a personal nature. Gratuities. Personal insurances. All flights (international, regional or domestic). Airport and departure taxes. Any meals not mentioned in the programme.

Programme subject to change.

Conservation Safari – “Meet the cheetah and leopard”

HIGHLIGHTS

- › On this eco-volunteer conservation safari, take part in the protection of threatened African wildlife
- › Join a research team and use telemetry equipment to track relocated cheetah and leopard

This programme offers a unique hands-on opportunity to join N/a'an ku sê's Eco-Volunteer Conservation Safari and to take part in the conservation of threatened African wildlife. You will get involved with all aspects of conservation programmes. The second part of your tour will take you South to the stunning surrounds of the NamibRand Nature Reserve



where you will participate in a carnivore tracking research programme to track wild cheetahs and leopards.

DAY 1, TRAVEL TO NAMIBRAND

› A fully equipped 4x4 Land Rover will be delivered to your lodge, ready for your self-drive trip down to the stunning NamibRand Nature Reserve. The drive will allow you to take in the wonderful changing scenery of central and southern Namibia.

DAY 2 TO 4, CARNIVORE TRACKING

› Carnivore tracking in NamibRand Nature Reserve, where you will stay for 3 nights.

› Explore the stunning scenery, magnificent vistas and a diverse array of unique landscapes as you track wild big cats across their local habitats,

which include red sand dunes, open glass plains, riverines and mountain ranges.

› N/a'an ku sê have released a number of cheetah and leopard into the reserve, each fitted with a radio collar enabling you to follow them closely. Most have been removed from other areas in Namibia because they posed a problem to people and livestock. By removing them from potentially life threatening situations we allow them to live free and safely in the wild once again.

› Join the N/a'an ku sê Research Team during their daily foot-tracking of these released cheetah and leopard. After checking some of the cats' positions on a computer early in the morning, you will spend the day tracking their movements on the ground using telemetry equipment.

If you are lucky you will even get to see the animals in their natural environment.

› The vital sightings and data gathered through your conservation safari will provide information on the animals' home ranges, habitats and ecology to help us safeguard these big cats and conserve the species for future generations.

› You will camp overnight or stay in the research base nestled in stunning surroundings of the NamibRand Nature Reserve.

DAY 5, RETURN TO N/A'AN KU SÊ WILDLIFE SANCTUARY

› After breakfast, return to N/a'an ku sê lodge in Windhoek where your tour ends.



2



3

- 1 - Tracking guests
- 2 - The cheetah
- 3 - N/a'an ku sê lodge tracking activities

Travel Period	March – December 2011
Travel Duration	5 days/4 nights
Group Size	n/a
Included in the Tour	1 night at N/a'an ku sê lodge. 3 nights NamibRand (camping or accommodation at research base). 3 meals a day (dinner only on day of arrival, breakfast only on day of departure, pack lunch provided for days travelling to and from NamibRand). 4x4 Land Rover hire for 4 days.
Excluded from the Tour	Alcoholic beverages and soft drinks (a cash bar will also be available). Personal travel insurance. Dinner in Swakopmund. Optional activities.

Programme subject to change.

Namibia 4x4 Off Road Guided Self-Drive Safari

HIGHLIGHTS

- › Explore Namibia's rugged mountains, deep gorges and thundering rivers on your 4x4 off road safari
- › Experience Kaokoland, home of the Himba people, and one of the last untouched wilderness areas in Southern Africa and refuge to the rare desert elephant, black rhino and giraffe

Experience some of the most beautiful areas of Namibia. Kaokoland, one of the last wilderness areas in Southern Africa, boasts incredible mountain scenery; is a refuge for the rare desert elephant, black rhino and giraffe; and is the home of the Himba people. Journey off the beaten track into Damaraland, one of the most scenic areas in Namibia. This

ruggedly beautiful region offers a more adventurous challenge. We then travel to the foot of the majestic Brandberg Mountain, and end in Swakopmund.

DAY 1, WINDHOEK

› Arrival at Windhoek Airport where you will be met and transferred to your accommodation.

- › Your guide will assist you in getting acquainted with the vehicle and working of the camping gear.
- › Time is then allowed to stock up on fuel and supplies for the journey that lies ahead.
- › Dinner at a restaurant in Windhoek.
- › Dinner and overnight at lodge in Windhoek.

DAY 2, SPITZKOPPE

- › Your expedition to the North of Namibia officially starts after an early breakfast. Today we head for the Spitzkoppe and should arrive around lunch time.
- › The Spitzkoppe (also referred to as Spitzkop, Groot Spitzkop, or the "Matterhorn of Namibia") is a group of bald granite peaks or bornhardts located between Usakos and Swakopmund in the Namib desert. The

- granite is more than 700 million years old, and the highest outcrop rises about 1784 metres above sea level.
- › You can join guided walks to some of the numerous rock-art sites or go for hikes on and around the mountain. If you are an experienced rock-climber, you might want to attempt the summit (bring your own gear). Donkey-cart rides are available on request.
- › Overnight at Spitzkoppe campsite.
- › Distance: 270 km

DAY 3, HOBATERE LODGE CAMPSITE

- › Today you will travel to the Hobatere Lodge campsite on the border of Etosha National park.
- › The night will be spent around the campfire chatting about the adventure that lies ahead. Your guide will prepare a nice dinner over the fire for you.





- › Overnight at Hobatere Lodge campsite.
- › Distance: 360 km

DAY 4, EPUPA FALLS

› Your journey today will take you up through the Kaokoland where you will pass through Opuwo and stop for a few supplies. Opuwo is the hometown of the Himba people. Here you will see the striking Himba woman. Although they dress to impress tourists these days, they are still quite remarkable. From Opuwo you take the road up to Epupa falls with the aim of arriving in the late afternoon. It is quite a long

drive, but beautiful and interesting. You will spend two nights camping at Epupa Falls.

- › Overnight at Epupa campsite.
- › Distance: 380 km

DAY 5, EPUPA FALLS

› Epupa is an appropriate Herero name, describing the sound of falling water of the twelve small waterfalls, which converge and plunge over the jumble of black, glistening rocks into the deep granite-lined gorge of the Kunene River. This a wonderful place to relax and watch the birdlife.

- › You also have the option of visiting a Himba village (Please note this is optional).

DAY 6, MARIENFLUSS / VAN ZYL'S PASS

› This is where the safari really gets great and may well be some of the best days of your life. Leave Epupa and start heading for the Marienfluss area. For two days, you will explore this magnificent area of Namibia, including the prospect of one night's wild camping.

- › Overnight at camp.
- › Distance: 230 km

DAY 7 TO 8, PURROS

› Depending on where you are in the above mentioned areas, you will head down to Purros. If you are still at the Marienfluss and have already visited Hartmann's Valley, you will travel south via the Hoarusib river. Here you can expect to start seeing the desert-adapted elephant and lots of other

game species such as Damara dik-dik, oryx, and springbok.

- › Overnight at Purros campsite.
- › Distance: 130 km

DAY 8, PURROS

› Early this morning, you will set out on a drive in the river bed, going closer to the coast. With a bit of luck you might



just see the desert lions that live in this area.

› We will return to camp in the late afternoon.

DAY 9 TO 10, PALMWAG CONCESSION

› Today is an early start as you head into the Damaraland area. Once again, depending on the time taken, you might do a wild camp tonight in the Palmwag concession area.

› You will travel through pristine areas and probably the most beautiful also. Damaraland is known for its large population of black rhino, elephants, giraffes, lions, and cheetahs. The flora in this area is also quite exceptional.

› Overnight at Palmwag camp.

› Distance: 240km

DAY 11, TWYFELFONTEIN AREA

› Leave Palmwag and drive south to Twyfelfontein. En route you will visit the Huab River in search of wildlife.

› Arrival at your camp in the afternoon.

› This is an arid, mountainous wilderness of rugged beauty, with spectacular gorges and rock formations. Rock engravings, the Organ Pipes and Burnt Mountain can be viewed at Twyfelfontein. The plants of Damaraland have evolved to survive in

an almost waterless environment.

› Overnight at Huab campsite.

› Distance: 150km

DAY 12, DOROS CRATER, UGAB RIVER

› Today's route will be one of your favourites. Travel via the Burnt Mountain and visit the Doros crater and some old gemstone mines, before you reach the camp late afternoon.

› Your destination is Brandberg campsite on the banks of the Ugab River.

› Overnight at Brandberg campsite.

› Distance: 130 km

DAY 13, SWAKOPMUND

› Today is the last day of the safari and you will travel to Swakopmund through the desert and via the Messum crater. En route, you will see the Giant Welwitschia plants. There will be lunch en route before arriving at your overnight accommodation in the late afternoon.

› Overnight at Municipal Bungalows.

› Distance: 310 km

DAY 14, SWAKOPMUND

› End of the tour.





5

- 1 · Damaraland*
- 2 · Himba women*
- 3 · Epupa falls
- 4 · Himba child*
- 5 · Petrified forest*
- 6 · Epupa falls
- 7 · Damaraland flora

* Image courtesy of Namibia Tourism



6



7

Travel Period	March – December 2011
Travel Duration	14 days / 13 nights
Group Size	1 - 6 vehicles
Included in the Tour	Experienced field guide and camp assistants. 3 meals a day as per programme, incl. coffee, tea and juice at the camp. Communal camping equipment such as showers, toilets, tables, braai grid, and washing-up facilities. All camping and park fees while on safari. Concession fees for Palmwag. 2-way radios for each vehicle.
Excluded from the Tour	Vehicle and fuel. Alcoholic beverages and soft drinks (a cash bar will also be available). Personal travel insurance. Dinner in Swakopmund. Optional activities.

Programme subject to change.

Cultural Exchange

HIGHLIGHTS

- › Learn about the Shona's beliefs and see the various stones used in the famous sculptures from the Shona tribe
- › The Great Zimbabwe Ruins, Africa's largest stone structure after the Egyptian pyramids

The word "Zimbabwe" derives from the Shona, meaning "House of Stone", which traditionally applied to the entire Chief's graves or homes. This 8-day journey will take you on a discovery tour of the culture and history of Zimbabwe, from the Shona culture and the remains of ancient powers, to its colonial past and the present economy of the country.

MONDAY, HARARE

- › Arrival in Harare.
- › Tour the city and see the State House, race course, Epworth Estate and its balancing rocks, and Heroes Acre and its graves of national heroes.
- › Dinner.

TUESDAY, HARARE

- › Travel to Domboshawa, a sacred mountain, and learn about the Shona's

beliefs.

- › Learn about the origins of the Shona tribe's famous sculptures at Chapungu Sculpture Centre.
- › Tour of Doone Estate followed by lunch.
- › Continue to the National Archives.
- › Dinner.

WEDNESDAY, MASVINGO

- › Visit the studio and estate of Patrick Mavros, a famous Zimbabwean sculptor specialising in silver figures.
- › Travel to Masvingo to explore the Great Zimbabwe Ruins.
- › See the symbolic Zimbabwean bird sculptures.

THURSDAY, BULAWAYO

- › Continue to the "City Of Kings."
- › Lunch at the colonial Bulawayo Club,

founded in 1855.

- › Visit the Natural History Museum and the open-air Vintage Train Museum.
- › Dinner.

FRIDAY, BULAWAYO

- › Tour the Matobo National Park, a World Heritage Site, which is famous for its black eagles, leopards and white rhinos.
- › Visit the "View of the World", a massive granite dome where Cecil John Rhodes' grave is located.
- › See the Bushman rock art in caves at Ntswatugi.
- › After lunch, game drive.
- › Dinner.

SATURDAY, VICTORIA FALLS

- › Travel to Victoria Falls, a World Heritage Site.

- › After lunch, visit one of the 7 Natural Wonders of the world, followed by a sunset cruise along the mighty Zambezi River.

SUNDAY, VICTORIA FALLS

- › Tour of the curio market. Visit a local village. Interact with local families and try traditional cuisine.
- › Stop at the 1500-year old Baobab tree.
- › View the Victoria Falls bridge, built in 1906.
- › Enjoy high tea on the "Grand old Lady's terrace" at the Victoria Falls Hotel.
- › Enjoy a traditional African dinner and entertainment at the Boma "place of eating".

MONDAY, DEPARTURE

- › Transfer to Victoria Falls Airport.



1



2

- 1 - Victoria Falls
- 2 - Victoria Falls Hotel
- 3 - Sculpture
- 4 - Boma Lead Drummer



3



4

Travel Period	All year round
Travel Duration	8 days / 7 nights
Group Size	2-8 persons
Included in the Tour	Accommodation subject to availability. We reserve the right to use alternative accommodation of similar standard. Meals, all excursions, national parks and entrance fees as per programme. Luxury A/C vehicle with an English-speaking driver guide. Open safari-vehicle game drives with English-speaking rangers at Matobo National Park. Airport and hotel portorage.
Excluded from the Tour	Visa fees. Drinks. Expenses of a personal nature. Gratuities. Personal insurances. All flights (international and regional), airport and departure taxes. Any meals not mentioned in the programme. All optional activities and excursions.

Note: Should there be a State Funeral, no one is allowed near the Heroes Acre. The visit will be replaced with an alternate excursion.

Quirimbas Birding

HIGHLIGHTS

- › Discover the birds of the Quirimbas National Park with a resident guide and birding specialist
- › See up to 800 waders on the flats at low tide on Ibo Island
- › Fantastic sightings of up to 200 crab plovers on Ibo Island

Mozambique is fast becoming the bird watcher's destination. Seasonal pelagic migrants arrive in northern Mozambique early November, and are one of the major highlights of this trip. The Quirimbas Archipelago is relatively unexplored from a birding perspective. Be one of the first to discover this amazing region. Ibo is a beautiful and unique location, surrounded by the Indian Ocean, coral reefs and islands, coastal intertidal zones and mangrove forests.

DAY 1, PEMBA

› Arrive in Pemba and transfer to Pemba Dive and Bush Camp.
 › Pemba, formerly known as Porto Amelia, is one of Mozambique's oldest holiday destinations. It is the vibrant capital of Cabo Delgado province. The city lies on the south shore of the

Pemba Bay, which is the third largest bay in the world.

› Afternoon guided walk on the fringe of Pemba's bay.
 › Accommodation at Pemba Dive and Bush Camp (standard Chalets) or similar.

DAY 2 TO 3, LAKE KAGAVERO

› Road transfer from Pemba through the Quirimbas National Park to Lake Kagavero near Mahati.
 › Morning and afternoon guided walks.
 › Time at leisure to view birds congregated around the lake.
 › Accommodation at a rustic camp on Lake Kagavero.

DAY 4, IBO ISLAND & QUIRIMBAS ARCHIPELAGO NATIONAL PARK

› Early morning road and boat transfer

to Ibo Island.

› Ibo Island is the perfect place to explore the Quirimbas Archipelago National Park in northern Mozambique. Steeped in history, rich in culture and nominated as a potential World Heritage Site, the island dates back to the early 1600s, making it one of the most ancient settlements in Mozambique.
 › Late afternoon guided walk on the intertidal flats.
 › Accommodation at Ibo Island Lodge.

DAY 5 TO 6, IBO ISLAND

& ULUMBWA ESTUARY
 › Explore Ibo Island.
 › Enjoy spectacular views over the intertidal flats. Daily early morning and afternoon walks to look at the coastal scrub and mangrove species in and around Ibo.

› Sea-based excursions to Ulumbwa estuary will be organised, where we have had fantastic sightings of up to 200 crab plover and other species.
 › Explore the intertidal flats and the surrounding estuary and mainland bush.
 › Accommodation at Ibo Island Lodge.

DAY 7, MATEMO & MANUEL DA SILVA ISLAND

› Sea-based excursion and boat trip to Matemo Island and Manuel Da Silva Island. These islands are just north of Ibo and offer some varied and exciting birding options. Walks on both islands.
 › Accommodation at Ibo Island Lodge.

DAY 8, OUTGOING FLIGHT

› Light air transfer from Ibo to Pemba in time for outgoing flight.



1



2

- 1 · Storks at sunset Ibo Island
- 2 · Pillars and figs
- 3 · Ibo silver
- 4 · Weaver bird



3



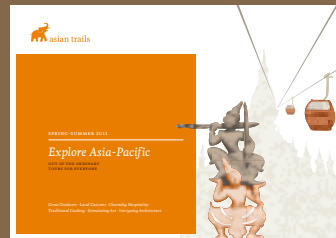
4

Travel Period	All year round
Travel Duration	8 days / 7 nights
Group Size	2-8 persons
Included in the Tour	Accommodation subject to availability. We reserve the right to use alternative accommodation of similar standard. Meals, excursions and entrance fees as per programme. Transfer from Pemba through the Quirimbas National Park. All meals excl. drinks, and daily transfers to a private sandbank beach at Ibo Island Lodge. Air transfer from Ibo Island to Pemba.
Excluded from the Tour	Visa fees. Personal, travel and medical insurance. All drinks. Meals not mentioned in the programme. Expenses of a personal nature. Gratuities. All other flights. Airport and departure taxes. All optional activities. Mozambique arrival, departure, airport, hotel and government taxes. Sanctuary and national park fees.

Please note that this itinerary is flexible and may change due to changing weather, birding opportunities and other factors.



Explore Arabia



Explore Asia-Pacific



Explore India



Explore North America

OUT OF THE ORDINARY
TOURS FOR EVERYONE

COME EXPLORE WITH US.
WWW.KUONI-DMC.COM