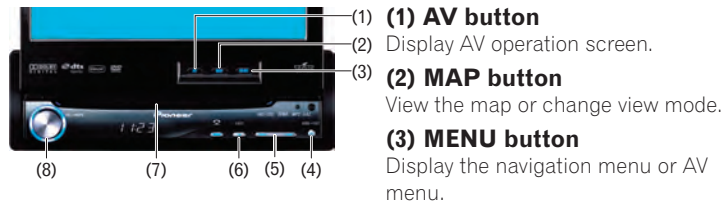


# AVIC-X3II

## Quick Start Guide

This guide is intended to guide you through the basic functions of this navigation system. For details, please refer to the Operation Manual provided with the product.

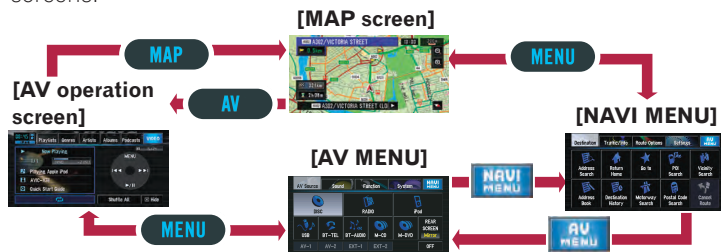
### Hardware buttons



- (4) **OPEN/CLOSE button**  
Open or close the LCD panel.
- (5) **Navigation buttons**  
Pressing this button when the AV source is selected skips a track, file or chapter. Press and hold to fast forward/fast reverse a track, file or chapter.
- (6) **EJECT button**
- (7) **Disc loading slot**
- (8) **VOLUME knob**  
Turn to adjust the AV (Audio and Video) volume or press to change the AV source. Press and hold the VOLUME knob to switch the source to mute.

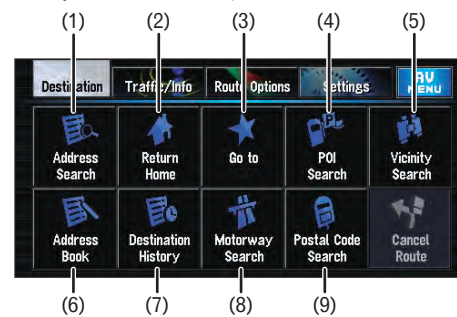
### Switching the screen

Press the following buttons and touch keys to display the respective screens.



### Search function overview

This navigation system has multiple methods for entering your destination.



- (1) Search by address
- (2) Shortcut key for home address
- (3) Shortcut key for favourite destination
- (4) Search for stores, restaurants, and other businesses in the points of interest database
- (5) Search for stores, restaurants, and other businesses in your vicinity

#### Search result list for vicinity search



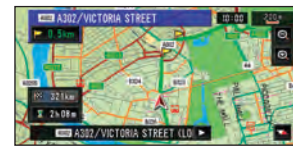
- (6) Select a destination from your address book
- (7) Select a previously routed destination
- (8) Select a route to a motorway entrance or exit
- (9) Search for a destination by postal code number

### Searching for your destination by address

- 1 Display the [NAVI MENU].
- 2 Touch the **Destination** tab and then touch **Address Search**.
- 3 Input the street name.
- 5 Input the house number and then touch **OK**.



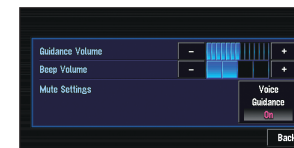
When route calculation is completed, navigation guidance begins.



Country key  
Touching the country key displays the country selector screen.

- 4 Select the street name from the list.  
After narrowing down your destination, the house number input screen will appear.
- This navigation systems gives you route guidance both visually and by voice.

### Setting the voice guidance volume



Touch the **Settings** tab in [NAVI MENU] and then touch **Volume**.

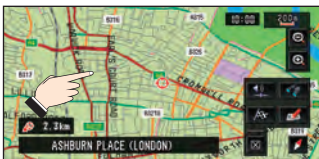
# Basic operation on the map screen

## Switching the view mode



Press the **MAP** button while displaying the map screen. This navigation system allows you to select different view modes depending on your preference.

## Scrolling the map

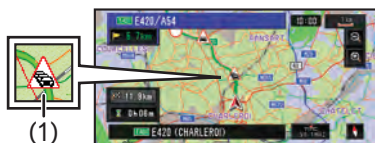


Touch and hold where you would like to scroll to on the map screen. After a few seconds, the scrolling will begin.

# Traffic information on the map

Traffic conditions can be overlaid on the map when there is traffic information transmitted by FM radio service through the Radio Data System (RDS-TMC).

- (1) **Traffic event**
- Stationary traffic
  - Slow and queuing traffic
  - Closed/blocked roads
  - Other event (e.g. accident)



# Selecting the AV source

Touch the **AV source** icon to select the desired AV source.



## (1) AV source icon

Sources that can be used from the beginning:

- **DISC** [CD, ROM, DVD-V, DivX]
- **RADIO** [Tuner]

Sources that need connection to an optional Pioneer equipment (sold separately) or external equipment:

- **iPod** [iPod]
- **BT-AUDIO** [Bluetooth-Audio]
- **USB** [USB-Audio]
- **M-CD** [Multi-CD player]
- **BT-TEL** [Bluetooth-Telephone]
- **M-DVD** [Multi-DVD player]



## (2) OFF [Switch to source off]

# Selecting the video for rear display

Touch **REAR SCREEN** to switch the video source for the rear display in the following order.

**Mirror** (Same as front) – **DVD** (DISC) – **AV1** (AV-1) – **AV2** (AV-2)

# Operating the AV operation screens

## DISC source screen(e.g. DVD-V)



Touch the screen to display touch panel keys, when you play the DVD-Video.

## Touch Panel keys

- Playback and Pause
- Skip the track/chapter forward or backward
- Stop playback
- Display touch panel keys to operate the DVD menu

## RADIO source screen

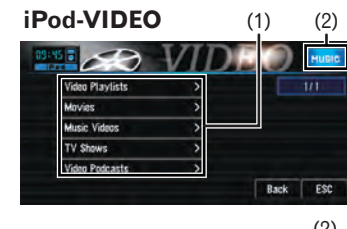
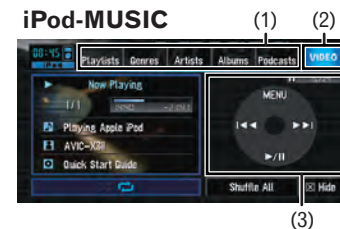


- ▲Up/▼Down**  
Switch the radio station
- ◀Seek/Seek▶**  
Seek tuning (keep touching for about one second and release).
- Band**  
Switch between bands:  
FM1-FM2-FM3-MW/LW

# Playing your Apple iPod®

You can control an iPod by connecting the Interface cable for iPod® (CD-I200) (sold separately) to the navigation system.

- 1 Display the **[AV MENU]**.
- 2 Touch the **iPod** icon to display the iPod source screen.



- (1) Touch one of the categories in which you want to search for a song or video.
- (2) Touch to switch between the video screen and the music screen.
- (3) Touch keys to operate the music/video source.