

Notice on the Addition of Functions to the BDP-LX91

In addition to the functions described in the operating instructions, there are a number of other functions that have been added to the BDP-LX91. These new functions are described in this notice. Also refer to the included operating instructions.

The additional functions are as follows:

- DTS-HD audio output
- Crossover frequency
- BD-LIVE

DTS-HD audio output

Output of the DTS Digital Surround and DTS-HD (DTS-HD High Resolution Audio and DTS-HD Master Audio) signals recorded on BD-ROMs has changed.

- Before the function was added, the DTS Digital Surround signals included within the DTS-HD signals were converted to linear PCM or analog audio signals for output. With the addition of the function, the DTS-HD signals are converted into linear PCM or analog audio signals for output.
- When using with a 7.1-channel speaker system, a maximum of 7.1 channels of DTS Digital Surround signals are output.

For details, refer to the table below.

Changes are indicated in **bold**.

Audio format	AUDIO OUT (7.1 ch) terminals		DIGITAL OUT terminals		HDMI OUT (MAIN) terminal	
	2ch ¹	Multi-channel ¹	Converted to linear PCM audio ²	Not converted to linear PCM audio ³	PCM ⁴	Auto ⁴
BD-ROM DTS Digital Surround					7.1-channel audio	DTS Digital Surround ^{6,8}
DTS-HD High Resolution Audio	Converted to 2-channel audio	7.1-channel audio	Converted to 2-channel audio	DTS Digital Surround ⁵	7.1-channel audio⁷	DTS-HD High Resolution Audio ^{6,7,8}
DTS-HD Master Audio						DTS-HD Master Audio ^{6,8,9}

1. When **Audio Output Mode** is set to **2 Channel** or **Multi-channel**.
2. When **DTS Out** is set to **DTS → PCM**.
3. When **DTS Out** is set to **DTS 1/DTS 2**.
4. When **HDMI Audio Out** is set to **PCM** or **Auto**.
5. When **DTS Out** is set to **DTS 2**, the secondary audio and interactive audio signals are not mixed in when outputting the DTS Digital Surround signals as a bitstream.
6. The secondary audio and interactive audio signals are not mixed in when outputting the DTS-HD Master Audio, DTS-HD High Resolution Audio or DTS Digital Surround signals as a bitstream.
7. When the output video resolution is set to 576i/480i or 576p/480p (480i or 480p for U.S. and Canadian models), the signals may be output in linear PCM (2 channels), depending on the **HDMI High Speed Transmission** setting and/or the connected HDMI device(s).
8. If the connected HDMI device is not compatible with DTS-HD Master Audio or DTS-HD High Resolution Audio, the signals are output in linear PCM (7.1 channels) or DTS Digital Surround bitstream.
If the connected HDMI device is not compatible with DTS Digital Surround bitstream, the signals are output in linear PCM (2 channels).
9. When the output video resolution is set to 576i/480i or 576p/480p (480i or 480p for U.S. and Canadian models), the signals may be output as linear PCM 2-channel or DTS Digital Surround bitstream signals, depending on the **HDMI High Speed Transmission** setting and/or the connected HDMI device(s).

Caution

- *The output from all terminals other than the ones selected for **Audio** does not sound as intended by the content provider.*

Manufactured under license under U.S. Patent #'s: 5,451,942; 5,956,674; 5,974,380; 5,978,762; 6,226,616; 6,487,535; 7,392,195; 7,272,567; 7,333,929; 7,212,872 & other U.S. and worldwide patents issued & pending. DTS is a registered trademark and the DTS logos, Symbol, DTS-HD and DTS-HD Master Audio | Essential are trademarks of DTS, Inc. © 1996-2008 DTS, Inc. All Rights Reserved.

Crossover frequency

The crossover frequency can be set at the speaker settings.

The crossover frequency setting is the frequency (Hz) below which the bass component of channels whose speaker size is set to **Small** is distributed to the subwoofer or left and right channels for output, as well as the frequency (Hz) below which LFE signals (the channel normally output to the subwoofer) are output.


Changing the crossover frequency

- When there are no speakers whose speaker size is set to **Small**, select **Bypass** for the crossover frequency.
- When there are speakers whose speaker size is set to **Small**, select the crossover frequency (**Bypass** cannot be selected).
- Also refer to "Changing the speaker setup" in the "Advanced settings" section of the operating instructions.


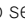
1 When playback is stopped, display the Home Menu screen.

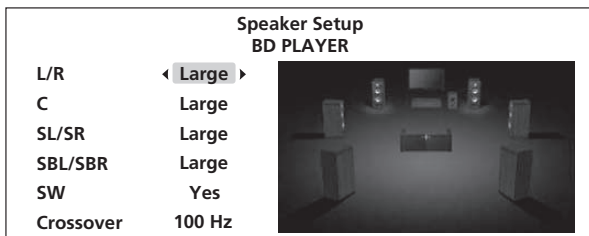
Press  **HOME MENU**.

2 Select and set Initial Setup → Speakers → Speaker Setup → Next Screen.

Use  to select, then press **ENTER**.

3 Select the crossover and change the setting.

Use  to select, then use  to change the setting.



- **Crossover:** Bypass/50 Hz/80 Hz/100 Hz/150 Hz

Note

- When a subwoofer with a filter bypass function is connected and there is no speaker whose speaker size is set to **Small**, if the subwoofer's filter is set to be bypassed, the player's high precision digital filter is used. In this case, set the crossover frequency to something other than **Bypass**.
- By default, the crossover frequency is set to **100 Hz**.
- Before the function was added, the crossover frequency was set to **100 Hz** if there were speakers whose speaker size was set to **Small**. Otherwise, it was set to **Bypass**.

BD-LIVE

This player supports BD-ROM Profile 2. Therefore, it supports both the BONUSVIEW and BD-LIVE functions.

BD-LIVE functions such as downloading movie trailers or additional audio and subtitle languages and playing on-line games can be enjoyed over the Internet. The additional data downloaded with the BD-LIVE function (trailers, etc.) is stored in the internal memory (4 GB). Refer to the disc's instructions for details about BD-LIVE functions.



"BD-LIVE" logo is trademark of Blu-ray Disc Association.

- To use the BD-LIVE functions, connect the player to an Ethernet hub (or a router with hub function) connected to the Internet.
- For instructions on connecting to the network, see "Network connection".

Erasing data that has been added to BDs and application data

Additional BD data (data downloaded with the BD-LIVE function and data used with the BONUSVIEW function) cannot be downloaded if the set's internal memory is full.

If a message indicating that there is not enough free space in the internal memory is displayed, erase the added data by executing the **Data Management** in the **Initial Setup**.

The BD-ROM's application data (high scores of games, bookmarks data, etc.) can also be erased.

Caution


- It takes time to erase the BDMV data for a while.
- Do not unplug the power cord while the data is being erased.

1 Display the Home Menu screen.

Press  **HOME MENU**.

This operation does not work when a disc is loaded.

2 Select and set Initial Setup → Data Management → erase menus.

Use  to select, then press **ENTER**.

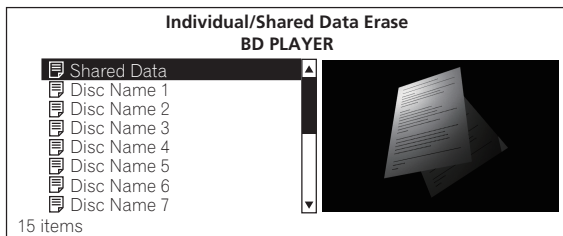
If **Data Management** is not displayed, erase the added data using **BDMV Data Erase** under **Options**. With **BDMV Data Erase**, the data downloaded with the BD-LIVE function, the data used with the BONUSVIEW function and the BD-ROM's application data (high scores of games, bookmarks data, etc.) is all erased.* **1**

There are three types of erase menus, as described below.

- **Individual/Shared Data Erase**

Use this procedure to select and erase data downloaded with the BD-LIVE function and data used with the BONUSVIEW function.

Select **Next Screen**, then press **ENTER**. The list screen appears.



When a disc name is selected, the data downloaded with the BD-LIVE function and data used with the BONUSVIEW is erased.

When **Shared Data** is selected, all the data downloaded with the BD-LIVE function and not associated to discs is erased.

Use **↑/↓** to select the data to be erased, then press **ENTER**.

- **Application Data Erase**

Use this procedure to erase BD-ROM application data (high scores of games, bookmarks data, etc.).

Select **Start**, then press **ENTER**.

- **Storage Format**

Use this procedure to format the storage in which the data downloaded with the BD-LIVE function and data used with the BONUSVIEW function is stored.

3 Select Yes, then press ENTER.

Use **←/→** to select, then press **ENTER**.

* 1

If you wish to erase individual data using **Data Management**, update the software to the latest version.

When this is done, the function for erasing data using **BDMV Data Erase** is eliminated.

Also, the data that has been saved before updating is moved to **Shared Data** under **Individual/Shared Data Erase** after updating.

There are two ways to update the software, as described below.

- Connecting this player to the Internet
For details, see the operating instructions.
- Creating an update disc
For details, see the Pioneer website.

Troubleshooting

- **BD-LIVE function (connection to the Internet) cannot be used.**

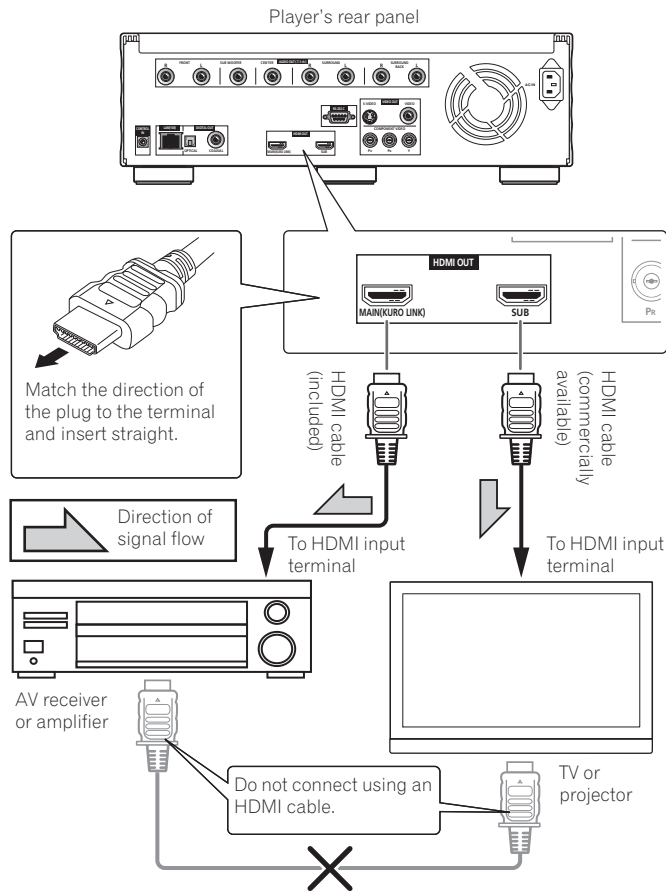
- ▶ Check in the same way as described under "*Software updating*" in the "*Troubleshooting*" section of the operating instructions.
- ▶ Perform the procedure at "*Erasing data that has been added to BDs and application data*" above.

- **"OK to grant network access to BD applications?" is displayed when a BD-LIVE compatible disc is read.**

- ▶ This is displayed for discs presenting security risks related to connection to the Internet. Normally select **No** when this is displayed. To allow connection to the Internet, select **Yes**.
 - ▶ This may be displayed even if the disc does not support the BD-Live function.
-

Others (frequently asked questions)

About the connections diagram at "Achieving better sound quality" under "Connecting up" - "Connecting an AV receiver or amplifier" in the operating instructions.



Q Connect the section marked "Do not connect using an HDMI cable".

A When connecting, pay attention to the following:

①Connecting may affect the sound quality.

②Turn off the TV's KURO LINK function.

- The KURO LINK function may switch the TV's input to **HDMI MAIN**.

- If the KURO LINK function cannot be turned off on the TV, turn the player's KURO LINK function Off. Note that doing so also turns off the PQLS function.

③Malfunctions may occur, depending on the connected devices. If this happens, disconnect.