

# HIGH QUALITY

ROAD MARKING MACHINES & EQUIPMENT  
- IT'S STRAIGHTFORWARD

- it's straightforward

[www.borum.as](http://www.borum.as)



# Best-in-class road marking machines and equipment

**Borum is one of the world's leading road marking machine and equipment manufacturers. We supply best-in-class, easy-to-operate road marking machines to large international companies, as well as small family-owned operators around the world.**

Over the past years, we've built up a global network of sales staff and service technicians, to ensure that you get great local service and sound advice.

We stay in close contact with our customers, and thanks to the valuable feedback they give us, our product development process and customer training programmes are tailored to help you get the best performance from your Borum road marking machines.

With our technologically advanced product portfolio, Borum road marking machines and equipment ensure maximum uptime, higher profitability, excellent operator comfort and reliability.

Let us help you make your road marking business even more successful.

**Ole Munch**  
Managing Director



- FLAT LINES
- PROFILED LINES
- DOT'N'LINE
- RIB-LINE
- AGGLOMERATE MARKING

THE CHOICE IS YOURS...

4



# Setting new standards in road marking

**All Borum machines can be supplied to work with either cold paint, hot thermoplastic or two-component cold plastic – and a variety of application methods.**

Road markings play a vital role in road safety and road marking quality and durability standards get tougher each year.

That's why we conduct in-depth research and use our extensive industry know-how to ensure our road marking machines and technologies stay ahead of performance specifications and quality control demands – and continue to set industry standards.

But no matter what material or line type you choose, marking with a Borum machine is straightforward and easy.

**– it's straightforward**  
[www.borum.as](http://www.borum.as)

## Meeting your capacity and application requirements

From cities and highways to motorways and mega-roads, there's a Borum self-propelled vehicle designed to meet your road marking needs. Each model offers a variety of operator friendly features to meet varying capacity and application requirements.

6





### **Borum City**

The smallest vehicle, the Borum City is compact and easy to manoeuvre, making it ideal for marking in city areas.



### **Borum Highway**

With a large tank capacity, the Borum Highway is designed for road marking projects on highways and in urban areas.

### **Borum Motorway**

Available with a range of tank capacities, the Borum Motorway is ideal for larger jobs and road marking on hilly terrain.



### **Borum Mini-truck**

Small and versatile, the Borum Mini-truck carries the equipment you need to get from one job to the next quickly.



For detailed information on all our machines, please visit [www.borum.as](http://www.borum.as)

**- it's straightforward**  
[www.borum.as](http://www.borum.as)

## Borum MegaRoad

**At Borum, designing and manufacturing customised, high quality truck solutions is one of our core competences. Our truck units can be designed to work with both cold paint and thermoplastic, as well as mark on both sides at the same time, saving you both time and money.**

Ideal for work in remote areas, the Borum MegaRoad is the perfect truck based solution. These tough, reliable machines can be fitted with a variety of features to suit your needs, including paint tanks with a maximum capacity of 3,000 litres. And with an application speed of up to 30 km/h, they are among the most efficient on the market. Borum MegaRoad is also ideal for major highway road marking or motorway work where capacity is a priority.



9

**- it's straightforward**  
[www.borum.as](http://www.borum.as)

# Borum LineMaster takes road marking to new levels

10





- 8" DISPLAY
- EASY ADJUSTMENT
- DAILY MARKING REPORT
- GPS MODULE
- 99 DIFFERENT LINE TYPES
- CHOICE OF LANGUAGE

**The new Borum LineMaster computer is revolutionising the road marking industry. With an intuitive Borum LineMaster onboard, a new Borum machine is not only the most intelligent machine on the market – it's also the easiest to operate.**

The Borum LineMaster computer offers:

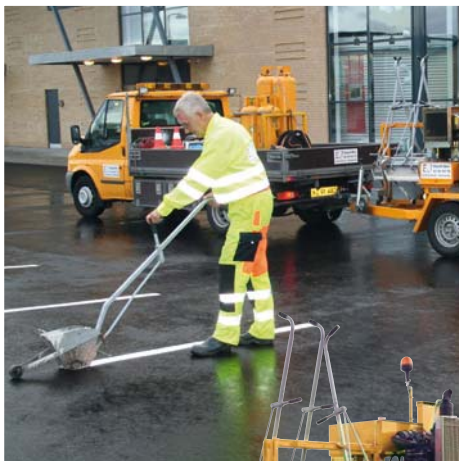
- Effortless transfer of the daily marking report to an office computer via a USB stick
- An 8" display with excellent visibility in sunshine or darkness
- Easy adjustment of all important parameters during marking
- Optional GPS module, which records line marking positions
- Storage of up to 99 different line types – arranged in up to 30 marking programs
- A choice of languages

Programmed to make life easier for everybody, from the operator to administration staff, the Borum LineMaster gives you total control of all your road marking tasks, from line application and pre-marking to reporting and invoicing.

**– it's straightforward**  
www.borum.as

# Preheaters, trailers and erasers

12





## **Borum also offers a range of additional equipment for professional road marking.**

The Borum thermoplastic preheater melts, heats and mixes the thermoplastic material ready for application.

Ideal for small, manual road marking jobs, the Borum trailer with thermoplastic preheater prepares and fills the hot thermoplastic directly into a hand-screed box.

With a robust double axle on a heavy-duty, welded steel-frame chassis, the Borum machine trailer is constructed to transport road marking machines safely, even on poorly maintained roads.

For trouble-free line removal, the Borum LineEraser is easy to handle and operate.

See our product data sheets on [www.borum.as](http://www.borum.as) for more information.



**- it's straightforward**  
[www.borum.as](http://www.borum.as)

# Borum total solutions

**At Borum, we know that the success of your business depends on reliable equipment that gets the job done – and does it well.**

Our experienced sales team provides expert advice on the right equipment for your road marking tasks. And with each new machine sold, we can offer onsite training for your staff to ensure an easy and profitable start-up.

To help meet the need for well-trained road marking staff, we have also launched the Borum Road Marking Academy, designed to improve your profitability and the quality of your road markings.

If you need our help with one of your machines, our dedicated customer service team is on-hand to help. We stock an extensive range of spare parts that can be shipped anywhere in the world within 24 hours. And if we can't find a solution over the phone, our trained local technicians provide quick onsite service.



**BORUM**

**- it's straightforward**

[www.borum.as](http://www.borum.as)

**For more  
information visit  
[www.borum.as](http://www.borum.as)**



Borum Industri A/S  
Højvangsvej 10, Hadbjerg  
DK-8370 Hadsten  
Phone +45 87 613 213  
Fax +45 87 613 214  
[info@borum.as](mailto:info@borum.as)  
[www.borum.as](http://www.borum.as)